

The Shofar



Temple Beth El Israel

551 SW Bethany Drive
Port St Lucie, FL 34986
phone 772-336-2424

May 2025
IYAR / SIVAN 5785

SAVE THE DATES...

May 3rd ~ Saturday Afternoon movie
~~~~~

May 16th ~ Dinner  
~~~~~

May 24th ~ Reminisce
~~~~~

Please note all events are subject to cancellation  
due to circumstances beyond our control  
and health & safety concerns

### Rabbi

Bruce Benson

### President

Faith Krumenacker

### Vice President

Norman Miller

### Treasurer

Dave Bialick

### Secretary

Arlene Schweitzer

### Sisterhood President

Linda Chazin

### Brotherhood President

Bill Shrage

### Board of Directors:

Lydia Bauman

Evelyn Poulter

Billy Weinshank

Nadine Wenzel

### Past President:

Lilly Beauchamp

### From the Desk of Rabbi Bruce Benson



“Eyn Chadash tachat haShemesh”.

There is nothing new under the sun.

While that is true, the idea of redeveloping, or redefining what has been done before isn't always a bad idea. In keeping with that quote from Ecclesiastes 1:9, we look for what has been hopefully, positive events to use as an anchor for ideas that pull us forward.

To that end, we are in the midst of planning several things to resurrect them, in new ways, like old friends coming back to the neighborhood.

First: as we tried an idea, to very positive result, we are about to initiate: SHABBOVIE (Shabbat and movie crunched together)..

Beginning in May, (the 3<sup>rd</sup> of May and many FIRST SATURDAY MORNINGS, following the Shabbat morning service, we will be showing movies of primarily Jewish content. This is for the combined vision of learning and entertainment. There will be no charge for these and they are in no way meant to feel like the offerings of the Treasure Coast Jewish Film Festival.

Our purpose is to begin the expansion of Shabbat offerings so that we can see Shabbat and the temple as a destination on Saturdays, thereby making Shabbat even more unique in our lives than it already is. Here's the dates so far:

May 3 ~ June 7 ~ July 5 ~ August 2 ~ November 1

**NO movies in September or October**

Titles of the movies shown will be listed later - BUT - The first movie is:

**Broadway Musicals, a Jewish Legacy.**

An 85 minute journey through the writers and performers of some of Broadway's greatest music.

Please note: As these movies will take place after a kiddush between the end of Shabbat morning services and movie beginning, if you are not planning on attending the service, we CANNOT give you an exact start time for the film.

*We would love to have you join us for the morning service, but if not, please plan accordingly as the movies will start sometime shortly after 11:30*

Rabbi Bruce



*The President's Communication Corner .....*

ביחד

*We are going to have a "Community Dinner" on **Friday night, May 16th** with members of the Shalom Club of Del Webb. The cost is \$22 and the deadline is May 9th. Please join us to welcome our neighbors to the Temple.*

*Save the date for our next semi-annual **Congregation meeting on Wednesday, May 14th**. Another reminder for the meeting will be sent out shortly. We need a quorum to conduct this meeting, so if you cannot attend please return the ballot(s) that were sent out so they can be counted toward the necessary number of attendees at the meeting.*

*Don't forget to buy your tickets for the Doo Wop show with Reminisce that we're having on **May 24th at 7 p.m.***

*And, once again we're going to have a Trivia Night on **June 14th at 7 p.m.***

*I wish everyone a Happy Mother's Day!!*

*Faith*



*Rabbi Benson's Cell Phone Number is: 561-601-8294*



**Our officer's phone numbers:**



|                                     |              |
|-------------------------------------|--------------|
| Faith Krumenacker ~ President       | 561-315-4281 |
| Norman Miller ~ Vice President      | 561-222-0676 |
| Dave Bialick ~ Treasurer            | 732-371-0555 |
| Arlene Schweitzer ~ Secretary       | 305-804-8979 |
| Linda Chazin ~ Sisterhood President | 772-871-1205 |
| Bill Shrage ~ Brotherhood President | 203-216-2218 |



**You're Invited!!!!**

**Join Rabbi Benson  
on Thursday mornings at 10 AM  
for our Torah Study class & discussion on ZOOM**

## *Sisterhood News*

***Hello Everyone,***

***Our May 20th General meeting will be a Radio Show performance, directed by Ferne Barishman, starring Sisterhood and Brotherhood members. It promises to be innovative and is highly anticipated!!***

***I look forward to seeing you all there!***

***Linda Chazin, President***

**HAPPY MOTHER'S DAY!**



## BROTHERHOOD NEWS :

Dear Members,

We are planning a Brotherhood outing to the July 3rd St Lucie Mets Game. It is an evening game that will include a fireworks display after the game. Anyone interested in attending can contact me.

A grateful thank you to everyone that has supported our Yellow Candle campaign with your generous donations.

We wish a Happy Mother's Day to our Sisterhood members.

Sincerely,  
Bill Shrager  
Brotherhood President  
[Sailshrager@aol.com](mailto:Sailshrager@aol.com)  
203-216-2219



Brotherhood participated in our  
Yom HaShoah service





### May Birthdays

6 Mary Bromberg  
 6 Janis Orne  
 7 Jillian Argenziano  
 9 Beverly Elster  
 10 Rhonda Gibula  
 10 Karol Levine  
 14 Jakob Israel Dobrin  
 14 Linda Greshes  
 19 Alan Levin  
 25 Arlyn Bialick



CONGRATULATIONS

### May Anniversaries



17 Rhonda & George Gibula  
 17 Suzanne & Chuck Waldron  
 18 Lori & Jason Grant  
 18 Pam & Richard Holmes

מזל טוב

If you don't see your birthday or anniversary listed in the Shofar contact the Temple office and ask to have your special day included.

PLEASE.....

Notify the Temple office or call the Rabbi if you are aware a fellow congregant is ill, or if a family member is ill, or has had an accident, or is in need of the Rabbi's services. The Rabbi can only help if he is informed that he is needed.



If you aren't getting  
 your emails from the Temple...  
 Check your spam folder  
 and put our email information  
 into the address book  
 in your computer.

### SAVE THE DATE

Our next semi-annual  
 Congregation meeting  
 will be on Wednesday afternoon,  
 May 14th, 2025 at 2 p.m.

Save the date

Please make every effort to attend.

We need to have a quorum to conduct the meeting.

WEBSITES • SEO • SOCIAL MEDIA MARKETING

**SAMROSS**

o: 772.340.1090  
 c: 772.971.0341  
 e: sales@printerpsl.com  
 www.printerpsl.com  
 10504 S. US Hwy. 1 PSL FL 3495

Join us for Shabbat.



## Save the dates

May 3rd ~ ~ Afternoon movie

May 14th ~ ~ Congregation meeting

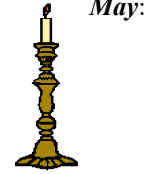
May 16th ~ ~ Dinner

Be a part of our Temple family  
Participate in our functions




To plant a tree in Israel the direct number is:  
800-542-8733      The cost is \$18.00

## Friday night Candle Lighting Schedule:



May:

|    |         |
|----|---------|
| 2  | 7:34 pm |
| 9  | 7:38 pm |
| 15 | 7:42 pm |
| 23 | 7:45 pm |
| 30 | 7:49 pm |

## Lighting the Shabbat Candles:

ברוך אתה יי אלהינו מלך העולם  
אשר קדשנו במצותיו וצונו  
להדליק נר של שבת: (אמן)

Baruch ata Adonay, Eloheynu melech ha-olam, asher kidshanu b'mitz-votuv, v'tzivanu l'hadlik nayr shel Shabbat.

Praised are You, Lord our G-d, King of the universe, who has taught us the way of holiness through the Mitzvot, and enjoined upon us the kindling of the Shabbat lights.



Our Shofar advertising year begins with the September issue. If you or anyone you know would like to advertise in our monthly newsletter please contact the Temple office for details.

Rates are as follows per year:

|                         |                  |
|-------------------------|------------------|
| FULL PAGE.....          | \$325.00         |
| HALF PAGE.....          | \$200.00         |
| QUARTER PAGE.....       | \$145.00         |
| BUSINESS CARD.....      | 95.00            |
| ONE-TIME FULL PAGE..... | \$ 40.00 / ISSUE |

Print-ready ads must be submitted no later than the 10th of the preceding month. Please send your ad to:

faithkrumenacker@comcast.net



## TREE OF LIFE AND MEMORIAL PLAQUES

Bronze - \$100  
Silver - \$150  
Gold - \$200

Memorial Plaques - \$200  
Call the Temple office @ 336-2424  
to reserve a leaf or memorial plaque



## THE KARP LAW FIRM, P.A.

Elder Law, Estate Planning, Wills & Trusts,  
Asset Preservation, Trust Administration,  
Medicaid & VA Benefits Planning, Probate,  
Estate Litigation, Elder Law/Probate Mediation

*"Your Peace of Mind is Our Priority"*



**Joseph S. Karp**  
Florida Bar Certified Elder  
Law Attorney,  
FL & NY Bar



**Jonathan D. Karp**  
Florida Estate Planning  
& Elder Law Attorney

*New Address*

1860 SW Fountainview Blvd., Suite 100

Port St. Lucie, FL 34986

Web: [www.karplaw.com](http://www.karplaw.com)

(772) 343-8411 (800) 893-9911



**This past month:**



*Thank you to Rob Glassberg for taking these photos.*

Temple Beth El Israel & The Shalom Club of Del Webb  
invite you to join us

# Shabbat

## Community Dinner

at Temple Beth El Israel

\$22. per person

Friday night, May 16th  
at 6:15 p.m.

Experience the uplifting energy of Shabbat, meet new people, and welcome Shabbat with peace, song and prayer in a warm and loving atmosphere.



THANK YOU FOR YOUR  
GENEROUS DONATIONS:

*Donations to the General Fund:*

Get well George Vansco  
Karen Wolf  
~  
Stu Schechter

Join Rabbi Benson  
on Thursday mornings at 10 AM  
for interesting Torah Study  
discussions on Zoom.  
We can all learn more about Judaism.  
No reservations necessary!!



YAHREZIT FUND DONATIONS

**From:**

Martin & Cynthia Cohen  
Sherry Frank  
Richard R & Karol Levine  
  
Ferne Barishman  
Phyllis Cypress  
Irving (Ving) & Judi Kamsler  
Harvey Levy  
Sherry Posner  
Donald Rose  
Alan Lisansky  
Harvey Levy  
Ronald & Lynne Berman  
Sheilah Korinow  
Marilyn R. Weiss  
William & Laurette Shrage

**In Memory Of:**

Joseph Sosnick  
Anne R Hartstein  
Julius Schiffman  
Doris Schiffman  
Sara Teitelbaum  
Jeanette Weinberg  
Mary Parker  
Judi Levy  
Roslyn Oxman  
Herman Rose  
Joseph Lisansky  
Loraine Levy  
Shirley Arlen  
Freida Korinow  
Charles Weiss  
Adela Benda

**NOTE:**

Above donations were received in March



**HAISLEY**  
Funeral & Cremation Service

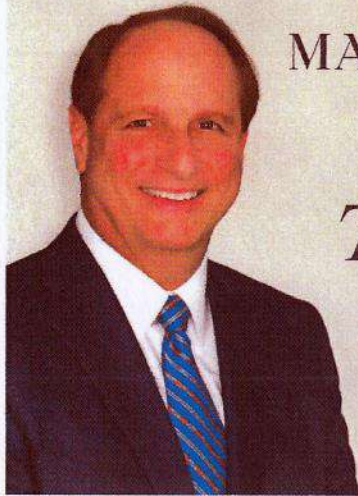
**Now with two Locations**

3015 Okeechobee Road, Fort Pierce, FL 34947, 772-461-5211

2041 SW Bayshore Blvd., Port St. Lucie, FL 34984, 772-879-1000

*Celebrating Life...Our Family Understands Your Loss*

SERVING THE TREASURE COAST SINCE 1993



## MARK R. KAISER MD PA DERMATOLOGY

772-286-7081

SAME-DAY APPOINTMENTS AVAILABLE  
MOST MAJOR INSURANCES ACCEPTED



MARK R KAISER, MD, FAAD  
DOUBLE BOARD CERTIFIED IN DERMATOLOGY  
MOHS PROCEDURAL DERMATOLOGY

AYLA MESSIER, APRN  
DERMATOLOGY NURSE  
PRACTITIONER

WELCOME  
NEW  
PATIENTS



### THREE CONVENIENT OFFICE LOCATIONS

**Stuart Office**  
301 SE Osceola St  
Stuart, FL 34994-2227

**Fort Pierce Office**  
1900 Nebraska Ave, Suite 3  
Fort Pierce, FL 34950

**Port St. Lucie Office**  
1701 SE Tiffany Ave, Suite 101  
Port St. Lucie, FL 34952

***Don't wait to be seen!***  
*We have same-day  
appointments available every day.*

### SERVICES

- Full Body Skin Exams
- MOHS Surgery & Excisional Surgery
- Phototherapy
- Chronic Wound Management
- Botox

WWW.KAISERDERMATOLOGY.COM

**IT'S THE 76th ANNIVERSARY OF ISRAEL'S ADMISSION TO THE UNITED NATIONS**



On April 11, 1949, 76 years ago this month, slightly less than one year after Israel's first prime minister David Ben-Gurion declared independence and just weeks after the most serious fighting in Israel's War of Independence came to an end, the United Nations voted to admit Israel as a full member-state. Although the country has since had an often-contentious relationship with the world body, obtaining membership after those first months of statehood served as one of the most important and lasting acknowledgements and symbols of independence and sovereignty.

This month's featured 20 cent stamp, issued in 1983, depicts the flag of Israel, one in a series that

includes flags of all the UN member nations. The cachet on the First Day Cover is a photo of Abba Eban, who would serve as Israel's representative to the UN, and David Hacothen, a member of the Knesset, raising the flag of Israel at the UN building in New York.

When UN General Assembly Resolution 273 came up for a vote, half a year after the application was first submitted, 37 countries voted in favor, 9 abstained, and 12 cast their votes against Israeli membership in the UN; the delegations of Arab countries walked out of the Assembly after the vote was announced. Israel became the 59th member of the body; today there are 193, which does not include Palestine, still considered a non-member observer state.

Immediately following the vote, Israel's flag was raised outside the UN building and "Hatikvah," Israel's national anthem, was sung. Israel's first foreign minister, Moshe Sharet, spoke at the UN that day, celebrating the "great event, which marks our full emancipation. Our flag has been raised proudly on the great circle which symbolizes the liberty and humanity of mankind. We have achieved liberty and equality in the family of nations and full creative appreciation for the national genius of our people." In the General Assembly's resolution approving the ascension of Israel to a full member-state, its members had affirmed that Israel was "a peace-loving State which accepts the obligations contained in the [UN] Charter and is able and willing to carry out those obligations."

But it also contained references to previous resolutions relating to conflicts in the Middle East; in voting to admit Israel, the UN made specific note of Resolutions 181 and 184. The former was the approval of the plan to partition the region, which had planted the seed for Israel's independence two years earlier. The latter resolution, which was passed half a year earlier after Israel's declaration of independence and the start of the War for Independence, called for Jerusalem to be an international city under UN control, and for allowing the conditional return of Palestinian refugees displaced in the war. Notably, Resolution 273 did not condition Israel's membership on the implementation of 181 and 194.

Nevertheless, the included mentions would foretell the frictions the Jewish state would face in the UN for years to come. To this day, in fact, issues related to Israel and aspects of Arab-Israeli conflicts occupy repeated annual debates, resolutions, and resources at the UN, many criticizing or condemning Israel's policies and practices regarding Palestinians in the West Bank.

Recently, however, UN Security Council Resolution 2735, adopted with unanimous support (Russia abstained) in June 2024, called on Hamas to accept a proposed hostage and ceasefire agreement in the ongoing Gaza war. The resolution detailed a three-phase proposal and noted Israel's acceptance. The Gaza hostage and ceasefire agreement, reached by Israel and Hamas in January 2025, is heavily based on the proposal outlined in 2735.

**CONGREGATION MEETING  
WEDNESDAY, MAY 14TH AT 2 P.M.**



## *Beth El Memorial Park, Inc.*

Located on Old Dixie Highway in Fort Pierce one mile north of Indrio Road.  
There are three pricing levels for gravesites, all of which include Perpetual Care.

TRADITIONAL PLOTS ARE 5' X 10'

CREMAINS PLOTS ARE 3' X 3'

|                                                                                          | TRADITIONAL | CREMAINS |
|------------------------------------------------------------------------------------------|-------------|----------|
| A - Husband, wife, dependent children under 22 who are members of Temple Beth El Israel. | \$1850.     | \$1000.  |
| B - Members of other Temples in the area.                                                | \$1850.     | \$1000.  |
| C - For non-members.                                                                     | \$2450.     | \$1200.  |

Add \$50. filing fee per sale not per grave site & \$195. for Perpetual Care

**Note:** For the purpose of this pricing, a member is one who has been a paid up member of their Temple for a period of more than one year.  
Opening and closing of 5 x 10 grave is \$1200 with a tent & chairs, opening and closing of 3 x 3 grave is \$450 without tent & chairs or \$750 with tent & chairs.

Add additional charge for Sunday & Holiday burials of \$300 for 5 x 10 and \$250 for 3 x 3. No burials on Shabbat or Jewish Holidays.

For more information please call: Bob Polakow (772) 807-3355 or Harold Schwartz (561) 635-5237

**THE DIRECT LINE FOR THE CEMETERY IS: 772-882-3601**  
**FOR ONLINE INFORMATION: BEMPTC.ORG**

If you take pictures at any of our functions, please send them to me so we can all share your photos.  
Send them to: [faithkrumenacker@comcast.net](mailto:faithkrumenacker@comcast.net)



**TREASURE COAST DERMATOLOGY**  
*Specializing in the Treatment of Skin Cancer*

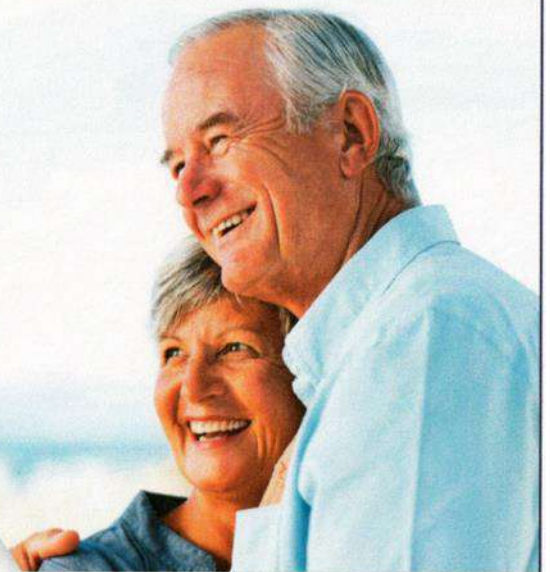
**TRUST US  
WITH THE HEALTH  
OF YOUR SKIN**



**TIM IOANNIDES, MD**

- Board Certified by the American Board of Dermatology
- Voluntary Associate Professor, University of Miami School of Medicine
- Fellow, American Academy of Dermatology
- Fellow, American Society for Mohs Surgery

[www.TCDermatology.com](http://www.TCDermatology.com)



St. Lucie West  
**772.878.3376**

Fort Pierce  
**772.464.6464**

Vero Beach  
**772.226.7218**



For us, there is no greater responsibility than helping to honor and preserve a life's story. We believe every life should be commemorated.

- Adhering to Jewish Traditions.
- Part of the Nation's Largest Network of Jewish Funeral Homes.
- Traditional Burials, Transfer from State and Cremations.



# AYCOCK

## FUNERAL HOMES

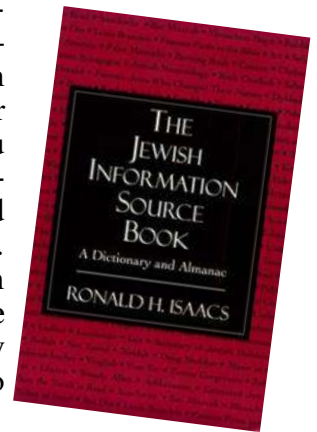
**Aycock Funeral Home**  
Floresta Drive  
1504 SE Floresta Drive  
772.878.0049

**Aycock At Tradition**  
Life Celebration Center  
12571 SW Tradition Parkway  
772-618-2336



### ***Our Monthly TBEI Library Book Review.....by Sheilah Korinow***

Have you ever wondered about something and wanted to find more information about it? Of course! We're human beings with functioning brains - even young children want to know who, what, or why. For older children and adults, there are three ways of finding information- asking another person is one, but that's not always possible, or they may not know the information you want. There may be only a small bit of info you wonder about. You can search the internet for that. But then there are those of us who just want to grab a book, sit down, and look through its pages of miscellaneous information we weren't even thinking about. However, when we notice the printed words in front of us, we suddenly want to search through all it has to offer. So I decided to review **\*The Jewish Information Source Book\*** by Ronald H. Isaacs. It's a book which, if you have spare time, you would enjoy searching from cover to cover with no specific information in mind. You are bound to find much of it interesting.



The book is divided into two parts - a dictionary which the Preface states: "contains concise definitions of terms, concepts, vocabulary, places and people that have shaped the Jewish people throughout their history" and a mini Jewish almanac which the Preface also states: "presents some fascinating facts related to Jewish experience, life, culture, and history." Also, "the almanac is a celebration of Jewish life and the Jewish people - a fact-filled treasury of information related to Jewish history, religion and tradition." I will be concentrating on the Almanac section of the book.

Now let's see what we are able to find in the second part of the book: Translation in the Bible, the Rashi Script, meanings of Names of Books of the Bible, Torah Portion Summaries (plus weekly portions), Judges of Israel, Famous Firsts in the Bible (first woman to demand property rights, first real estate transaction involving a woman) plus many more, the 613 Commandments in the Torah (365 are negative, telling us what not to do, and 248 positive ones that tell us what to do), as set forth by Maimonides. Topics include: God, Torah, Temple and the Priests, Sacrifices, Vows, Ritual Purity, Donations to the Temple, Animals for Consumption, Festivals, Community, Idolatry, War, Family, Judicial items, Slavery and Torts. Also included are: Prohibitions Resulting from Historical events, the Temple, Sacrifices, Priests, Dietary Laws, Nazarites, Agriculture, Loans, Business, and the Treatment of Slaves, Justice, Incest and Forbidden Relationships, and the Monarchy. Read Famous sayings from "Ethics of the Father" such as: "Run to perform even a minor mitzvah. One good deed brings another good deed". (something to think about). Then we read a list of Ancient Cures for Diseases. There is even a list of Occupations of Talmudic Rabbis. Did you know that Hillel was a woodcutter?

We may also read Rabbinic Quotes about the Diet - ("crying chases away the appetite"), and Specific Activities Prohibited on the Sabbath. There is a chapter about Jews in America - people who played an important role in our nation's history. They are divided into major categories such as Patriotism, Religion, Abolition, Political Life, The Military, Women, The Judicial System, Science and Medicine, Business, Music, Writers, Art, Journalism, Theater, Philanthropy and Sports. Some of these will sound familiar to you, and others may seem unfamiliar. There is a chapter on Israel with highlights in its history, leaders, geographical information and more. We also read about the names of Jerusalem and other interesting miscellaneous info about the city. There is still another chapter about Jewish Life. It includes such subjects as; False Messiahs, Maimonides' Principles of Faith, the Hebrew Alphabet (how it is printed and written, its sounds and numerical values), and Jewish Numerology (what is the importance of the number 2 in Jewish life, as well as the numbers 3,4,5,6,7,8,10,12 and 40). You will also find information about The Names of God, Famous Jews (by choice, and those who have changed their names), Jewish Organizations, Jewish Surnames and Their Meanings (based on physical characteristics, occupations, geography and personal characteristics).

There is also a list of Hebrew names and their meanings. Hebrew is another topic with lists of words and expressions used every day and there is even a list of Aramaic words. Then we have many interesting facts about the Hebrew calendar, which is divided into its months, each month including historical information about its events. You can even look up each month and find its sign of the zodiac. The book also delves into the Jewish Holidays - find each one's duration, its other names, its theme, foods related to it and customs attached to it, all in a nice little summary of what we are and are not familiar with.

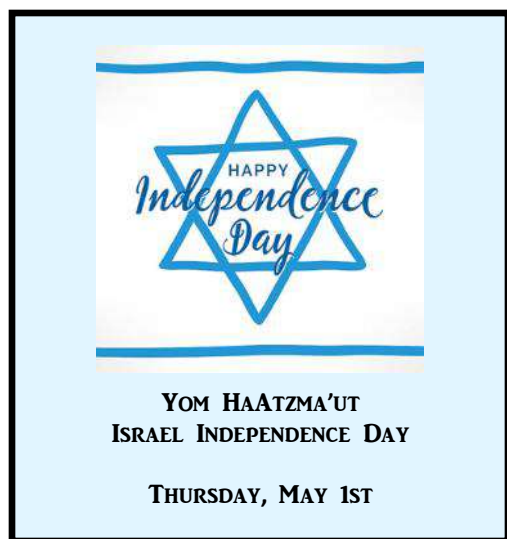
*Continued on next page....*

*Continued from previous page....*

Added to that are Jewish Commemorations - not officially religious holidays, but important, nevertheless. There are interesting bits of facts, such as 17 Kosher Symbols you might find on foods - some of which I've never seen before! There are even 8 tombstone symbols, including what they mean. Do you want to know the musical instruments that were used during biblical and Temple times? There is a list of ten in this book, including their descriptions. There are even blessings for many things we do, see, and taste. We already know those for bread, wine and fruit, but did you know there are blessings upon smelling the fragrance of shrubs and trees, of plants and herbs, of fragrant fruit, of fragrant oils, upon seeing a rainbow, for seeing the trees blossom, upon seeing the ocean, upon seeing trees or creatures of unusual beauty, upon seeing lightning, shooting stars, mountains, or a sunrise? There are even blessings upon seeing a person distinguished in knowledge of Torah (and for secular knowledge), upon seeing a friend after a long separation, when hearing good news (or even tragic news). The blessings keep coming. We are a people with great gratitude concerning God and what He has done for us!

This book, then, is one which contains information that you probably would never have thought of had you not sat down to look through its pages. It contains so much more than I have given you. Maybe you might find the need to research items you want to know more about - that's what the Internet is for. **\*The Jewish Information Source Book\*** is just a stepping stone on a long journey to seek even more knowledge.

If you would like to check out this book from our library, let me know at skorinow@ gmail.com or call me at 781 686 2299.



#### **DO A "JEWBER" MITZVAH ~ ~**

**IF YOU LIVE IN A COMMUNITY, OR NEAR WHERE SOMEONE ELSE LIVES, WHO CAN'T DRIVE AT NIGHT OR JUST NEEDS A RIDE TO GET TO THE TEMPLE, PLEASE CALL THE TEMPLE TO FIND OUT IF YOU CAN HELP ANOTHER MEMBER WHO WOULD LIKE TO COME TO SERVICES OR ANY OF OUR EVENTS OR SHOWS.**

**IT'S A MITZVAH!!**



***Don't miss our upcoming show with***

## ***Reminisce***

***Saturday, May 24th at 7 p.m.***

***Tickets are \$25***

# Yates Funeral Home & Cremation Services

Family Owned and Operated  
Serving the Jewish community of the Treasure Coast  
For over 75 years

Now with three convenient locations to better serve you

Port St. Lucie  
7951 S. US1

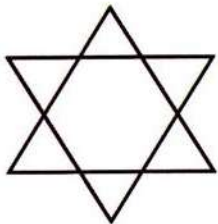
Port St. Lucie  
526 SW Port St. Lucie Blvd.  
(Just west of the Turnpike)

Fort Pierce  
1101 S. US 1

Fort Pierce (772) 461-7000

Port St. Lucie (772) 878-2300

[www.YatesFuneralHome.com](http://www.YatesFuneralHome.com)



*Temple Beth El Israel Presents*

# ***Reminisce***

*Saturday, May 24th at 7 p.m.*

***Tickets \$25***



***Purchase tickets at Temple Beth El Israel  
551 SW Bethany Drive ~ St Lucie West 34986***

***Monday to Friday 10 a.m. to 1 p.m.***

***For information call 772-336-2424***

***Refreshments will be served after the performance***

## MAY YAHRZEITS



*In Loving Memory*

5/2 - 5/3

William Barland  
Max Baum  
Dr. Pauline Bender  
Ruth Berg  
John Brooking  
Laurie Campbell  
Rita Cassel  
Edward Cypress  
Jack Derector  
Sol Frankel  
Harry Fruman  
Rose L. Fuss  
Wilbur J. Grazi  
Barbara Greenberg  
Regina Greenwald  
Jeannette Gubin  
Isaac Herman  
Sidney Josen  
Elizabeth Kimmel  
Ruth Kimmel  
William Klein  
Shirley Lang  
Morris Merlin  
Lillian Michaels  
Adele Najar  
Lewis Polk  
Eda Sabino-Amrose  
Fanny Sayewitz  
Sheila Stockel  
Sarah Suckman  
Pearl Tannenbaum  
Babe Leah Thau  
Lena Trieger  
Abraham Weismann  
Henrietta Wild  
Natalie Zywics

5/9 - 5/10

Max Auerbach  
Sumner Berenson  
Nathan Black  
Rebecca Block  
Nathan Emas  
Ruth Faber  
Libby Shapiro Harris  
Annie Heller  
Frederick Holtsberg  
Jack Janoff  
Isaac Kaplan  
Rosalind Kupper  
Emanuel Lirtzman  
Mollie Lynn  
Sidy Mandel  
Ethel Rolnick  
Bernard Rubin  
Ida Sachs  
Marian Saphire  
Henry Schildmeier  
Helen Toner Schneider  
Bertha Schnier  
Florence Schulman  
Joel Spencer Siegman  
Sheldon Stein  
Victoria Steisel  
Edward Tannenbaum  
Frank Waldron  
Clarice C. Waters  
Ruth Lorainne Weinberg  
Emanuel Weiss  
Mark Yudlowitz

5/16 - 5/17

Sylvia Barenberg  
Ivan Benda  
Rabbi Samuel Block  
Nathan Blumer  
Abram Brener  
Abraham Brown  
Paul Faber  
Robert Goldberg  
Ida (Resnick) Gurvitz  
Morris Hirsch  
Joseph Kleinman  
Solomon Levy  
Nathan Mager  
Minnie Michaels  
Sarah D. Motel  
Harry Rubin  
Philip Schneck  
Bernard Schulman  
Jack Silverman  
Irma Sirotta  
Lena Wisan  
Frances Young

5/23 - 5/24

William Barishman  
Arnold Baslow  
Dorothy Blumer  
Bert Bogner  
Charles Matthew Datz  
Mildred Estersohn  
Evelyn Feldman  
Saul S. Goldstone  
Edward Katzman  
Jerry Kosten  
Minnie Levine  
Donald Lustig  
Florence Nathanson  
Howard Passin  
Michael Prepon  
William Rappaport  
Sidney Roberts  
Philip Sachs  
Pauline Sapiro  
Lillian Schreiber  
Samuel Stoller  
Sidney Tanner  
Ida Hilda Wheatley  
Alan Zeff

5/30 - 5/31

Hazel Abelsky  
Esther Belsky  
Albert Blumer  
J. Alan Bornstein  
Phillip Cypress  
Abraham Deckman  
Ethel Freilingsdorf  
Shirley Goldsmith  
Jack Gould  
Gerry Greshes  
Andrew Hutchison  
Louis Jacobs  
Irving Kampf  
Eric Michael Margid  
Robert E. Morris  
Julius Oxman  
Louis Rosenzweig  
Alexander Safeer  
Harry Schachter  
Evelyn Schulman  
Anne Yudlowitz



### APPROPRIATE PRACTICES:

- *Kaddish at Synagogue*
- *Memorial candle at home*
- *Donation to Synagogue in tribute to the memory of a deceased loved one*

### Yahrzeit

Observance is an annual reminder of the date of death of a loved one and a tribute to the influence they made on our lives.

***Kaddish for your loved one will be recited during the services on the Shabbat before the Yahrzeit date.***

**Congregation Meeting**  
**Wednesday, May 14th at 2 p.m.**

*We will be resuming Shabbat prayer-study. The classes will be held on the third Friday of the month (holiday conflict dates excluded) at 6:00 pm in the sanctuary.*

*Again, at least for some time into the session, when discussing Shabbat services, we will be using our copies of "Mishkan T'filah: the Journal Edition" \* This version of our siddur allows us to not only study the prayers, but to make notes in the siddur as well for future review and reference.*

*As of now these are the scheduled dates:*

**June \*\*\*NOTE: Class in June will be held on Friday, June 13 ~ NOT THE 20<sup>th</sup>!!**  
**July 18**

**August 15 - we will start to discuss High Holiday prayers**

**September 5 - notice date change for September!**

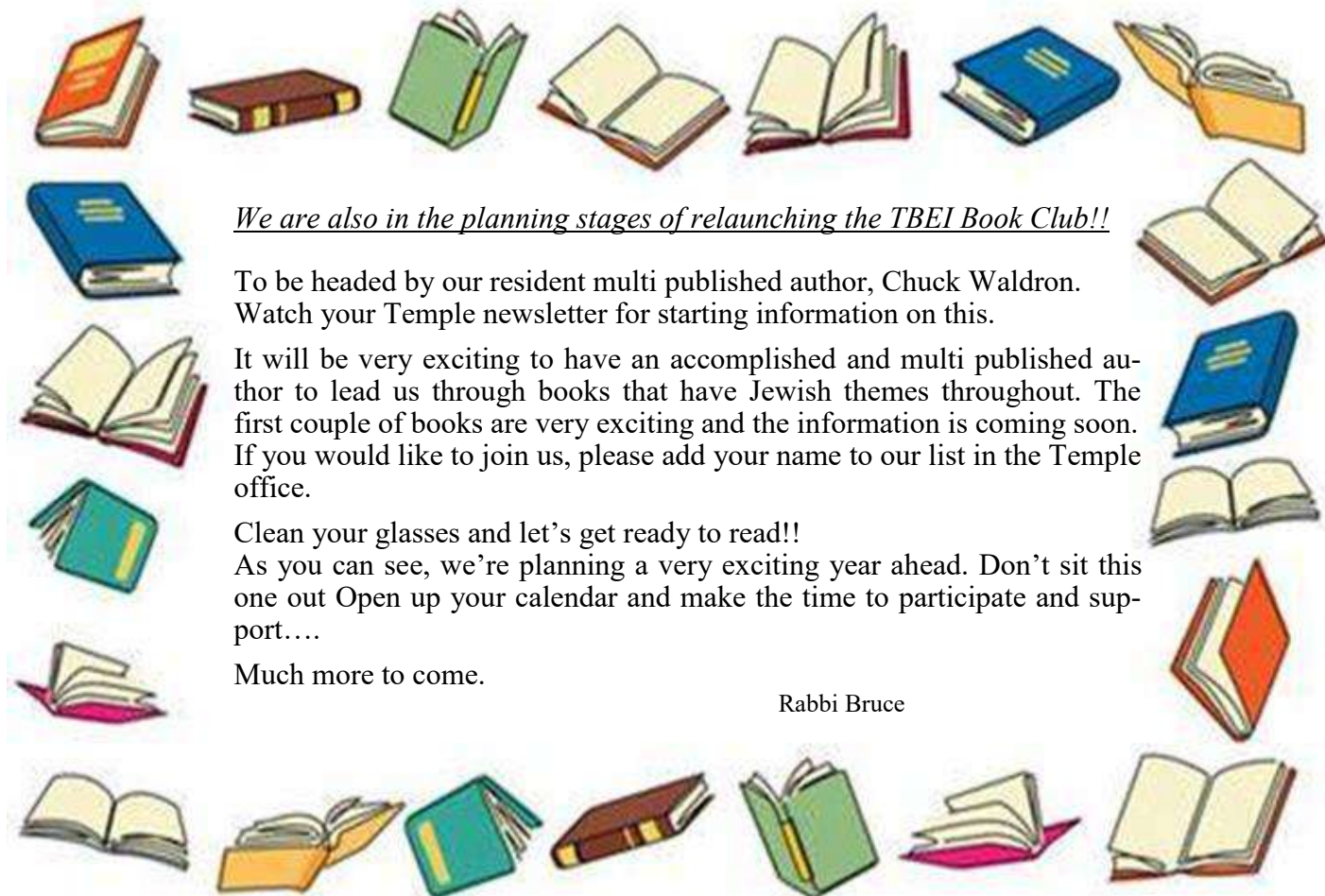
**September 19 - High Holy Day prayers prior to Rosh Hashana**

**September 26 - Yom Kippur prayer review**

Class schedule for after the holidays will be printed in the September Shofar.

*\* If you need a copy of the Journal volume, please notify the Temple office.*

*The cost is \$25. And it is yours to keep.*



*We are also in the planning stages of relaunching the TBEI Book Club!!*

To be headed by our resident multi published author, Chuck Waldron. Watch your Temple newsletter for starting information on this.

It will be very exciting to have an accomplished and multi published author to lead us through books that have Jewish themes throughout. The first couple of books are very exciting and the information is coming soon. If you would like to join us, please add your name to our list in the Temple office.

Clean your glasses and let's get ready to read!!

As you can see, we're planning a very exciting year ahead. Don't sit this one out Open up your calendar and make the time to participate and support....

Much more to come.

Rabbi Bruce

Temple Beth El Israel  
551 SW Bethany Drive  
Port St Lucie, FL 34986  
772-336-2424



Join us on Saturday, June 14th at 7 p.m.

\$15 per person

Put your group together  
(up to 10 per table)

**PRIZES !!!**

**SNACKS !!!**



**FUN !**





## TEMPLE BETH EL ISRAEL DONATION OPPORTUNITIES

Donor's Name \_\_\_\_\_

Address \_\_\_\_\_

City \_\_\_\_\_ State \_\_\_\_\_ Zip \_\_\_\_\_ Phone \_\_\_\_\_

### Payable to TBEI:

\$ \_\_\_\_\_ Building Reserve Fund (to help cover expenses for repairs to equipment)

\$ \_\_\_\_\_ Capital Improvement Fund (for major improvements)

\$ \_\_\_\_\_ Flower Fund (for flowers on the Bima for Shabbat & Holidays)

\$ \_\_\_\_\_ General Fund (for general operations)

\$ \_\_\_\_\_ Hevra Fund (provides meals of consolation for families in mourning)

\$ \_\_\_\_\_ Kiddush Fund (provides refreshments after Shabbat morning services)

\$ \_\_\_\_\_ Leaf on the Tree of Life:

Bronze \$100 Silver \$150 Gold \$200

In remembrance of a special person or event

Forms are available in the Temple office

\$ \_\_\_\_\_ Library Fund (for the purchase and upkeep of library books and equipment)

\$ \_\_\_\_\_ Memorial Plaques - \$200 - in memory of a loved one

Forms are available in the Temple office

\$ \_\_\_\_\_ Religious School Scholarship Fund

(provides need-based scholarships for students attending our religious school)

\$ \_\_\_\_\_ Yahrzeit Fund (commemorates the anniversary of the death of a loved one)

\$ \_\_\_\_\_ Music Fund (to provide musical accompaniment on Holidays and events)

\$ \_\_\_\_\_ Security Fund (to offset the cost of the Security Guard at TBEI)

\$ \_\_\_\_\_ Special ***Holocaust Torah MST 860 Fund***

### Payable to Rabbi's Discretionary Fund:

\$ \_\_\_\_\_ For the use of the Rabbi for educational/charitable projects

### Payable to TBEI Sisterhood:

\$ \_\_\_\_\_ Ida Rubin Book of Life (to send cards for any occasion (birthday, get well, etc)

\$ \_\_\_\_\_ Oneg Shabbat Fund (provides refreshments after Friday night Services.

**PLEASE INDICATE THE NAME OF THE FUND RECEIVING YOUR DONATION ON THE MEMO LINE OF YOUR CHECK**

# May 2025

3 Iyar 5785 - 4 Sivan 5785

Sunday

Monday

Tuesday

Wednesday

Thursday

Friday

Saturday

**Save the dates:**

**Saturday Afternoon Movie - May 3rd**  
**Community Dinner - Friday, May 16th**  
**Reminisce - Saturday, May 24th**

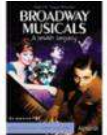
1 3 IYAR  
 Yom HaAtzma'ut  
 Weight Watchers  
 6 p.m.



2 4 IYAR  
 7:34  
 Friday Night Service  
 7:30 p.m.



3 5 IYAR  
 Tazria - Metzora  
 Saturday Morning  
 Service 10 a.m.  
 Saturday Movie  
 Kiddush after the  
 service



4 6 IYAR  
 Sanctuary Rental

5 7 IYAR  
 Bingo  
 Doors open at 5 p.m.



6 8 IYAR  
 Sisterhood Board  
 Meeting 10 a.m.  
 Brotherhood Board  
 Meeting 7 p.m.

7 9 IYAR  
 Weight Watchers  
 8 a.m. and 9:30 a.m.



8 10 IYAR  
 Weight Watchers  
 6 p.m.



9 11 IYAR  
 7:38  
 Friday Night Service  
 7:30 p.m.



10 12 IYAR  
 Acharei Mot -  
 Kedoshim  
 Saturday Morning  
 Service 10 a.m.



11 13 IYAR  
 Sanctuary Rental

12 14 IYAR  
 Pesach Sheini  
 Bingo  
 Doors open at 5 p.m.



13 15 IYAR  
 Fundraising Meeting  
 6 p.m.  
 Temple Board Meeting  
 7 p.m.

14 16 IYAR  
 Weight Watchers  
 8 a.m. and 9:30 a.m.



Congregation Meeting  
 2 p.m.

15 17 IYAR  
 Weight Watchers  
 6 p.m.



16 18 IYAR  
 Lag BaOmer  
 7:42  
 Shabbat Dinner  
 6:15 p.m.  
 Friday Night Service  
 7:30 p.m.



17 19 IYAR  
 Emor  
 Saturday Morning  
 Service 10 a.m.



18 20 IYAR  
 Sanctuary Rental

19 21 IYAR  
 Bingo  
 Doors open at 5 p.m.



20 22 IYAR  
 Sisterhood General  
 Meeting 11:30 a.m.  
 Rental Meeting  
 6 p.m.

21 23 IYAR  
 Weight Watchers  
 8 a.m. and 9:30 a.m.



22 24 IYAR  
 Weight Watchers  
 6 p.m.



23 25 IYAR  
 7:45  
 Friday Night Service  
 7:30 p.m.



24 26 IYAR  
 Behar - Bechukosai  
 Saturday Morning  
 Service 10 a.m.

Reminisce  
 Doo Wop Show  
 7 p.m.



25 27 IYAR  
 Sanctuary Rental

26 28 IYAR  
 Yom Yerushalayim  
 Memorial Day  
 Bingo  
 Doors open at 5 p.m.



27 29 IYAR

28 1 SIVAN  
 Rosh Chodesh Sivan  
 Weight Watchers  
 8 a.m. and 9:30 a.m.



29 2 SIVAN  
 Weight Watchers  
 6 p.m.



30 3 SIVAN  
 7:49  
 Friday Night Service  
 7:30 p.m.



31 4 SIVAN  
 Bemidbar  
 Saturday Morning  
 Service 10 a.m.





**TEMPLE BETH EL ISRAEL**  
**551 SW Bethany Drive**  
**Port St. Lucie, FL 34986**  
<http://www.templebethelisrael.org>



OR CURRENT RESIDENT



*Jerusalem Day*  
*May 26th*

