

The Shofar



Temple Beth El Israel

551 SW Bethany Drive
Port St Lucie, FL 34986
phone 772-336-2424

January 2025
TEVET / SHEVAT 5785

SAVE THE DATES...

**January 11th
Music Bingo**

~

**February 18th
Sisterhood Card Party/Luncheon**

~

**March 8th
Shaboom Doo Wop Show**

Rabbi

Bruce Benson

President

Faith Krumenacker

Vice President

Norman Miller

Treasurer

David Bialick

Secretary

Arlene Schweitzer

Sisterhood President

Linda Chazin

Brotherhood President

Bill Shrage

Board of Directors:

Lydia Bauman

Evelyn Poulter

Billy Weinshank

Nadine Wenzel

Past President:

Lilly Beauchamp

**HAPPY
NEW YEAR**



From the Desk of Rabbi Bruce Benson



And so it goes with a simple flip of a page a year's propelled into the past creating memories to be emblazoned on the journey line of our lives.

"I remember 2024" we will say as we roam into an unknown future with the touchstones of past experience to help us step ahead.

There is much baggage to carry us on the trek.

We, as Jews, have much more to carry with us - it is our requirement to evaluate events, good and bad, that crowd our minds and hopefully adapt our behaviors. It is our blessing and our curse.

There have been years when we were on top of history and all was relatively good. And then, there were the other years.

Having just celebrated the history making victory of the Maccabees over the Greeks in the war of independence (168-164 B.C.E.- ish), we defeated one of the worlds great cultures. It disappeared and we prevailed.

The Romans, the Third Reich and so many others tried to expunge the

"scourge of the Jews" and have failed. Miracle after miracle has our God brought to us. As we enter the next year, 2025, let the light of the newly blazing Chanukah at the front of our building bring us pride and so much more.

Finding purpose in the yearly lighting of the menorahs, let this year remind us that:

On the first nite of Chanukah, May we remember all that God brought to us

On the second nite of Chanukah, all the beauty that Jews have brought to the world

On the third nite of Chanukah, remember the medical breakthroughs created by Jews, shared with the world

On the fourth nite of Chanukah, all the inventions Jews brought to the world

On the fifth nite of Chanukah, all the combined answers brought to the world through Nobel prize winners

On the sixth nite of Chanukah, may the world understand the beauty of our hearts

On the seventh nite of Chanukah, may we remember the miracle of our families

On the eighth nite of Chanukah, remember that as God's chosen people, it is, in fact, we who chose God, not the other way around and that, in that chosen-ness, we are required to present to the world a right way of living as an example and a light for all the world to follow.

I know - you're reading this saying "what's with him? Chanukah is over." Well - the holiday may have ended, but the lessons, newly brought back to light, are fresh in our minds and are NOT static for just the 8 days. They are ours to remember and live by EVERY day.

Let us move forward as a "light unto the nations" teaching by example.

May the Chanukah lights shine bright as we move into this next year. Looking forward to seeing you at temple for events, services, classes and so much more.

Have a chag sameach and a happy, healthy New Year.

Rabbi Bruce

The President's Communication Corner

ביחד

Happy & Healthy New Year to everyone in our Temple family.

We ended 2024 on such a high note with the recent comedy show starring Peter Fogel and Stu Moss. I'm hopeful that 2025 will continue to bring us more of TBEI enjoying happy and uplifting occasions.

We have several events coming up in the next couple of months, let's all show our appreciation for the work that goes into the planning and preparing for these events by attending. We're getting ready for Music Bingo on January 11th, the Sisterhood Card Party/Luncheon on February 18th, Brotherhood's Dine & Donate dinner at Recovery Grill and a Doo Wop show with ShaBoom on March 8th.

Thank you to everyone that has volunteered and worked so hard during this past year wherever they were needed to help.

Let's stay healthy and safe together.

Faith



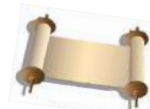
Rabbi Benson's Cell Phone Number is: 561-601-8294

Our officer's phone numbers:

Faith Krumenacker ~ President	561-315-4281
Norman Miller ~ Vice President	561-222-0676
David Bialick ~ Treasurer	732-371-0555
Arlene Schweitzer ~ Recording Secretary	305-804-8979
Linda Chazin ~ Sisterhood President	772-871-1205
Bill Shrage ~ Brotherhood President	203-216-2218



You're Invited!!!!



**Join Rabbi Benson
on Thursday mornings at 10 AM
for our Torah Study Class on ZOOM
The link is in this issue on page 12.**

Sisterhood News

Greetings Sisterhood and Brotherhood members!!

My wish for 2025 is for you all to stay well!!

Our meeting is scheduled for Tuesday, January 21st at 11:30. Our speaker is Jonathan Karp from The Karp Law Firm. He will bring us up to date on Elder Law including Wills, Trusts, Powers of Attorney, Medicaid, Nursing Home Costs, Incapacity, and Probate. He is a wonderful speaker and will answer all your questions. Ladies and Gentlemen, be sure to let us know that you will attend.

Ladies, a reminder that our Sisterhood Card, Mahjong and Game Party is Tuesday, February 18th at 11:30. Tutto Fresco is catering lunch. Tickets are \$25.00 and are available in the office. Get your games together, buy your tickets and support Sisterhood.

I look forward to greeting you!

Linda Chazin, President

Shabbat Across America

**LET'S CELEBRATE SHABBAT ACROSS AMERICA TOGETHER
WITH A POT LUCK DINNER
FRIDAY NIGHT, MARCH 7TH AT 6 PM**



THE SPIRIT OF SHABBAT:

**"MORE THAN JEWS HAVE KEPT SHABBAT,
SHABBAT HAS KEPT THE JEWS."**

-ACHAD HA'AM

**Please contact the Temple office by February 28th
to let us know what you can bring to this dinner
so that we don't all bring the same thing.**

BROTHERHOOD NEWS :

Dear Members,

On Thursday, December 19th Ving Kamsler gave a presentation on Taxes and Estate Planning. It was extremely informative and well attended. Our thanks to Irving for taking the time to put this together.

As a reminder, on January 9th from 10 to 11 a.m. Dr. Kurt will present a demonstration on CPR. The Sisterhood is invited.

The Dine & Donate fundraiser at the Recovery Grill in Tradition is on for February 5th beginning at 4 p.m., as well as take out throughout the day. The flyers for this event are in the Temple lobby. You need to bring a flyer to present at the restaurant in order to receive the donation. There will be music and dancing that evening. Feel free to give flyers to friends and neighbors or bring a group of friends to dine. This will help the Brotherhood to make this fundraiser a success.

We are looking at some dates for a St. Lucie Mets baseball game (or several games) beginning in April when their season starts. We will keep you posted.

Sincerely,
Bill Shrage, Brotherhood President
sailshrage@aol.com



dine to DONATE

Wednesday, February 5, 2025 4PM-8PM

Date/Time

Port St. Lucie, FL

Location

Temple Beth El Israel

Organization

Please present at the time of payment to have up to 15% of your check's value, excluding tax & tip, donated to the organization above. Not to be used with any other coupons or discounts. Tickets are not to be distributed in the restaurant or within the parameter or parking areas. Valid only for the date and time listed above.

**Thank you
To everyone that
donated to our recent
Food Drive**



This past month:



We celebrated the third day of Chanukah with games for everyone.



Visit our Judaica Shop
We have many new and beautiful items on sale.
Call for an appointment

Linda 871-1205

Faith 561-315-4281

TEMPLE BETH EL ISRAEL

PRESENTS



ALL NEW

MUSIC BINGO

SATURDAY, JANUARY 11th

STARTING PROMPLY AT 7 PM

\$15 per person

**Come play Music Bingo
and enjoy Tacos & snacks**

551 SW Bethany Drive
St Lucie West
For information call
772-336-2424

This past month:



*We had a great
Chanukah celebration*

IDA RUBIN BOOK OF LIFE

SPEEDY RECOVERY TO NADINE WENZEL:

Doris Haendel
Judi & Ving Kamsler
Karol & Richard Levine

SPEEDY RECOVERY TO FRAN TAMA:

Karol & Richard Levine

SPEEDY RECOVERY TO DORIS HAENDEL:

Karol & Richard Levine

CONDOLENCES TO YUPA BROFMAN ON THE LOSS OF HER MOTHER:

Judi & Ving Kamsler

CONDOLENCES TO BOB POLAKOW ON THE LOSS OF HIS WIFE SUSAN:

Ferne Barishman
Linda & Bernie Chazin
Cecile & Sam Levy



**PLEASE CALL KAROL LEVINE
TO SEND IDA RUBIN CARDS
240-285-3039**

**Our Judaica Shop has a large selection of items
that are great for gifts
and many items are at very discounted prices!!
Don't forget to get your Enjoyment Book for 2024!!**



"Friendly, Willing, Dependable...Moving You Forward!"

Serving the Treasure Coast Since 1983

24 HR EMERGENCY SERVICE

PROFESSIONALLY TRAINED TECHNICIANS

772-221-1660

ONE CALL

**For All Your Electric and
Air Conditioning Needs**

**MAINTENANCE AGREEMENTS • REPAIRS • UPGRADES
NEW EQUIPMENT • INTERIOR LIGHTING • REMODELS
ADDITIONS • GENERATORS • SITE LIGHTING
LANDSCAPE LIGHTING • SMOKE ALARMS
COMMERCIAL • RESIDENTIAL**

LIC. #EC13007849

LIC. #CAC1816767

This past month:



We ate latkes, Rabbi Benson lit our new 9-foot Hanukiah in front of the Temple and then we lit our Hanukiahs in the sanctuary before the service.




Julia Argenziano

Please join us as we celebrate the Bat Mitzvah of our daughter.

Julia is in 7th grade at St Lucie West K-8 where she takes all advanced classes. Julia is an avid volleyball player for her school and at Up On Top Volleyball Academy. She also volunteers at the Humane Society of the Treasure Coast in her spare time caring for the animals in the critter room. We are looking forward to Julia becoming a Bat Mitzvah on Feb 8, 2025.

Jill & John Argenziano

Thank you to Rob Glassberg for taking the photos at our Chanukah celebration.

The background of the flyer is a collage of Mahjong tiles and playing cards. At the top, there are tiles with Chinese characters '伍萬' (50,000), a circular floral pattern, a red diamond pattern, and a green dragon tile. On the right, a Queen of Spades playing card is visible, holding a green dragon tile. In the center, there are more Mahjong tiles, including one with a green dragon and a blue bird. At the bottom, there are tiles with characters '三萬', '六萬', '九萬', and '見我'. The overall theme is a mix of traditional Chinese Mahjong and Western playing cards.

Sisterhood of Temple Beth El Israel

Presents
**Our Annual
MahJong / Card Party**

Catered by
Tutto Fresco

Tuesday, February 18, 2025

11:30 a.m. to 3:30 p.m.

Tickets \$25 per person

Tickets available at the Temple Office

551 SW Bethany Drive, Port St. Lucie Tel (772) 336-2424

Open 10 - 1 Monday through Friday

Ticket sale deadline is February 10, 2025.

January Birthdays

- 2 Leonard Epstein
- 2 Katherine Vesey
- 5 Samuel C. Levy
- 6 Carol Seigel
- 7 Benjamin Rosichan-Nader
- 7 Jacob Rosichan-Nader
- 7 Janet Soloshatz
- 8 Eve Epstein
- 11 Roni Roth Beshears
- 11 David Lazer
- 12 Carol Honig
- 14 Lory Dobrin
- 15 Laurette Shrage
- 20 Irving (Ving) Kamsler
- 22 Caroline Levy
- 24 Julia Marie Argenziano
- 24 Beth Glassberg
- 30 Paul Davis
- 31 Doris Haendel



January Anniversaries



- 5 Mr. & Mrs. Alan Bennett
- 15 Mr. & Mrs. Jeff Kreiss
- 31 Mr & Mrs Lewis Honig

CONGRATULATIONS

חג שמחה

מזל טוב

If you don't see your birthday or anniversary listed in the Shofar contact the Temple office and ask to have your special day included on our list.

Saturday, March 8th at 7 p.m. ~ ~ tickets are \$25.



Shaboom! Will sing all your favorite Hits from the
50's & 60's

Join Rabbi Benson for:

TORAH STUDY



We meet every THURSDAY beginning at 10:00 a.m.
to study and reflect on the weekly Torah portion.
Join us for this study of the Torah and its specific lessons for the week.
Here's the Zoom link:

<https://us02web.zoom.us/j/84122238910>

We look forward to having you join this lively discussion.

**For more information about
what's happening in the Temple
go to TBEI.org**



H AISLEY

Funeral & Cremation Service

Now with two Locations

3015 Okeechobee Road, Fort Pierce, FL 34947, 772-461-5211

2041 SW Bayshore Blvd., Port St. Lucie, FL 34984, 772-879-1000

Celebrating Life...Our Family Understands Your Loss

**THE STAMP CORNER ~ ~ DAVID BEN-GURION
ELECTED ISRAEL'S FIRST PRIME MINISTER ~ 76 YEARS AGO THIS MONTH**

By Ellis Bromberg

After leading Israel during the 1948 Arab-Israeli War, David Ben-Gurion was elected its first Prime Minister 76 years ago this month, on January 25, 1949, when his Mapai (Labor) Party won the largest number of Knesset seats in Israel's first national election. No other personality in modern Jewish history made such an impact on Israel and its people. The leader of the Jewish community in British-ruled Mandatory Palestine and the Labor Movement during the struggle for Israeli independence, now as head of its first government, Ben-Gurion became the voice that proclaimed the renaissance of Jewish independence after 20 centuries.

Born David Green, in 1886 in Plonsk, Poland, he changed his name to Ben-Gurion after settling in the Palestine region of the Ottoman Empire in 1906. He soon became one of its first and leading labor organizers. In 1912, he went to Constantinople to study law. He returned at the outbreak of World War I, was expelled by the Ottoman authorities, and arrived in the United States in 1915. Always active in Zionist affairs, he helped create the Jewish Legion, a series of battalions of Jewish soldiers who served in the British Army during WWI and returned to Palestine to volunteer in the British conquest of the region over the Ottomans. After WWI, he devoted his energies to the unification of the Jewish labor movement. He was among the founders of Histadrut, Israel's General Federation of Labor, and served as its secretary general from 1921-



1935. In 1935, he was elected chairman of the Zionist Executive in Jerusalem and became the chief spokesman for the Jewish population in its struggle against the Mandatory authorities as well as in the parallel war effort against Nazi Germany.

After the end of World War II, and in view of the tragedy that had befallen the Jews of Europe, his demands for Jewish statehood became more insistent and urgent. On May 14, 1948, it was his voice that announced to the world the rebirth of the State of Israel. It was his conduct that led the emerging state-nation to victory in the War of Independence. And it was he who: set up the Israel Defense Forces; introduced uniform State education; proclaimed Jerusalem's status as the nation's capital; launched the mass immigration of the early 1950s; and gave impetus to the settlement and development of the Negev.

He resigned in 1953, but returned to the government two years later, first as Minister of Defense and subsequently as Prime Minister. In that office he led the country to victory in the Sinai War of 1956. He retired finally in 1963 but continued for years to be involved in politics. In 1970, he gave up his Knesset seat and devoted himself mainly to writing his memoirs.

His short, stocky white-maned figure towered over Israel's history. No other individual in the first 25 years of the country's existence made so great a contribution to its development. No one succeeded in providing greater leadership than the man who passed away in 1973, after 87 years packed with action, 70 of which he spent in the country that he cherished.

Many sites in Israel commemorate the "father of modern Israel," most notably Ben-Gurion Airport in Lod, southeast of Tel Aviv, the main international airport of the country.

David Ben-Gurion died on December 1, 1973. He is buried in a simple grave in the Negev kibbutz of Sede Boker alongside his devoted wife Paula. He was pictured in this month's featured pair of Israeli stamps, issued in 1974 with denominations of 0.25 and 1.30 Israeli Lira, the year after his death.

TREASURE COAST JEWISH FILM FESTIVAL

“BURNING LAND”

STREAMING JANUARY 3rd - 5th
LIVE SUNDAY, JANUARY 5TH
REFRESHMENTS AT 2 P.M. ~ FILM AT 2:30 P.M.
DISCUSSION WITH OUR RABBIS
JANUARY 5th AT 4:30 P.M.

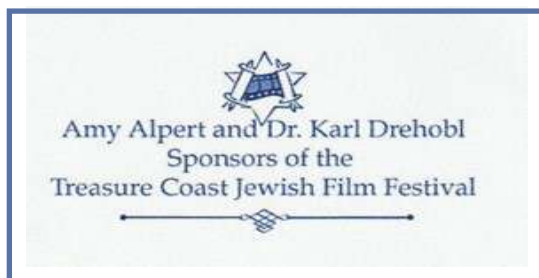
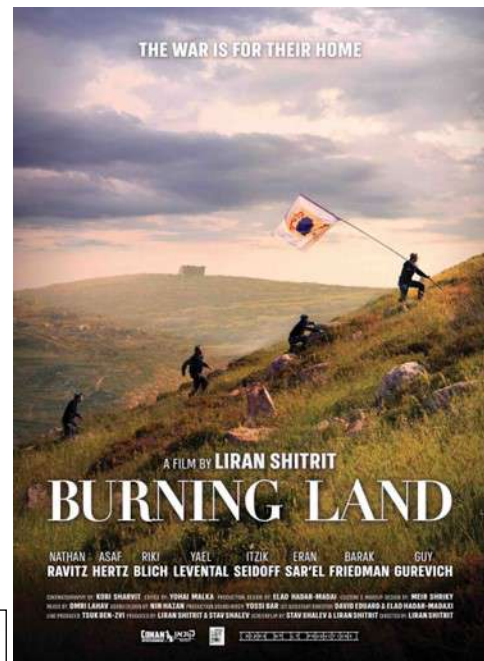
FOR NON-MEMBER INFORMATION CONTACT

steveshankman@gmail.com
or 954 -703-0451

DONATION \$6.00 PER PERSON FOR NON-MEMBERS

TEMPLE BEIT HAYAM
951 SE MONTEREY COMMONS
STUART, FL
772-286-1531
RABBI MATHEW DURBIN

Yair, a teenage runaway flees from the law into the contested area of Samaria. He bonds with a group of boys who live on a hilltop, in a shack and who believe all the land belongs to Israel. He is enrolled in a yeshiva where the Rabbi shares their radical views and is dragged into a conflict with the surrounding Arab neighbors



**NEW ADULT ED CLASSES WILL BE ON ZOOM AND LIVE AT THE TEMPLE
ON TUESDAY MORNINGS FROM 10:00 - 11:30 A.M.**

“STORIES & LITERATURE”

THIS SERIES OF LECTURES WILL BE ON VARIED SUBJECTS OF JEWISH INTEREST.
THE SCHEDULE AND THE TOPICS GIVEN BY A NUMBER OF DIFFERENT LECTURERS IS BELOW.
INTERESTING DISCUSSIONS WILL FOLLOW THE LECTURES.

JANUARY 7 - THIS IS A 5 LECTURE SERIES: STORY OF THE BIBLE, #1
JANUARY 14 - STORY OF THE BIBLE. #2
JANUARY 21 - STORY OF THE BIBLE. #3
JANUARY 28 - STORY OF THE BIBLE. #4
FEBRUARY 4 - STORY OF THE BIBLE. #5

FEBRUARY 11 - GREAT MYTHOLOGIES: THE BOOK OF JOB
FEBRUARY 18 - MEDIEVAL LEGACY: ANTI-SEMITISM
FEBRUARY 25 - “RICHARD THE LIONHEART” (THE 3RD CRUSADE)

MARCH 4 - BIBLICAL WISDOM LITERATURE:
AN INTRODUCTION TO BIBLICAL WISDOM LITERATURE (1)
MARCH 11 - BIBLICAL WISDOM LITERATURE (2)
MARCH 18 - BIBLICAL WISDOM LITERATURE (3)
MARCH 25 - BIBLICAL WISDOM LITERATURE (4)
APRIL 1 - BIBLICAL WISDOM LITERATURE (5)
APRIL 8 - BIBLICAL WISDOM LITERATURE (6)
APRIL 15 - BIBLICAL WISDOM LITERATURE (7)

MORE CLASSES TO FOLLOW.

** IF YOU ARE GOING TO BE WATCHING FROM HOME: THE LINK FOR EVERY CLASS, IS THE SAME.
COPY IT AND PUT IT ON YOUR DESKTOP SO THAT YOU SIMPLY CLICK ON IT EVERY WEEK AND IT WILL
BRING YOU TO THE “WAITING ROOM” WHERE YOU WILL BE LET IN.

**PLEASE BE AWARE THAT THE CLASSES START ON TIME
AND ONCE THE LECTURES HAVE BEGUN, THEY CANNOT BE STOPPED OR RESTARTED.**

To Join Zoom Meeting:

<https://us02web.zoom.us/j/84122238910?pwd=OUJRWDdKb0JmbHdUQ3BkVmRLZlBSdz09>

Meeting ID: 841 2223 8910 Passcode: kJ372a (The J is capitalized)

CARPETS Etc
 Carpet Vinyl Tile Wood
 Rob Sharot, Owner
 1374 SE Huffman Road 270 NW Peacock Blvd., Ste. 107
 Port St. Lucie, FL 34952 Port St. Lucie, FL 34986
 info@carpetsetcpsl.com www.carpetsetcpsl.com
 772-878-4707 • FAX: 772-878-4767

Friday night Candle Lighting Schedule:

January:

3	5:25 pm
10	5:30 pm
17	5:35 pm
24	5:40 pm
31	5:46 pm

Lighting the Shabbat Candles:

ברוך אתה יי אלהינו מלך העולם
 אשר קדשנו במצוותיו וציוונו
 להדליק נר של שבת: (אמן)

Baruch ata Adonay, Eloheynu melech ha-olam, asher kid-shanu b'mitz-votuv, v'tzivanu l'hadlik nayr shel Shabbat.

Praised are You, Lord our G-d, King of the universe, who has taught us the way of holiness through the Mitzvot, and enjoined upon us the kindling of the Shabbat lights.

JEWISH NATIONAL FUND USA

To plant a tree in Israel the direct number is:
 800-542-8733 The cost is \$18.00



Our Shofar advertising year begins with the September issue. If you or anyone you know would like to advertise in our monthly newsletter please contact the Temple office for details.

Rates are as follows per year:

- FULL PAGE.....\$325.00
- HALF PAGE.....\$200.00
- QUARTER PAGE.....\$145.00
- BUSINESS CARD..... 95.00
- ONE-TIME FULL PAGE.....\$ 40.00 / ISSUE

Print-ready ads must be submitted no later than August 10th for the September issue. Please send your ad to:

faithkrumenacker@comcast.net

TREE OF LIFE AND MEMORIAL PLAQUES

Bronze - \$100
 Silver - \$150
 Gold - \$200
 Memorial Plaques - \$200
 Call the Temple office @ 336-2424 to reserve a leaf or memorial plaque

THE KARP LAW FIRM, P.A.
 Elder Law, Estate Planning, Wills & Trusts, Asset Preservation, Trust Administration, Medicaid & VA Benefits Planning, Probate, Estate Litigation, Elder Law/Probate Mediation

“Your Peace of Mind is Our Priority”

Joseph S. Karp
 Florida Bar Certified Elder Law Attorney,
 FL & NY Bar

Jonathan D. Karp
 Florida Estate Planning & Elder Law Attorney

**1860 SW Fountainview Blvd., Suite 100
 Port St. Lucie, FL 34986
 Web: www.karplaw.com
 (772) 343-8411 (800) 893-9911**

YOUR 2025 TREASURE COAST ENJOYMENT BOOK CONTAINS HUNDREDS OF COUPONS WORTH THOUSANDS OF DOLLARS

FINE & CASUAL DINING

3rd Avenue Alta Cucina
 Amato's Ristorante Pizzeria
 American Icon Brewery
 Casa Azteca Mexican Restaurant
 Castrogiovanni
 Duffy's Sports Grill
 Golden Corral
 Great Greek Mediterranean Grill, The
 Italian Kitchen of Vero
 J.J. Plum's Cafe
 La Mattina's Trattoria & Pizza Bar
 Michelina's Italian Restaurant & Catering
 Mr. Gyros
 Pei Wei
 Perkins
 Rise & Grind Cafe
 Ruffino's
 Sailfish Brewing Company
 Sailfish Sports Club & Grille
 Sammy J's Diner
 Santo's Wood Fired Pizza Restaurant
 Sauder's Landing
 Shindig Irish Restaurant & Pub
 South Beach Pizzeria
 Sunset Café
 Swift Grill
 Tail Gators Brews & Grill
 Three Little Birds Cafe
 Three Tides Caribbean Restaurant & Bar

INFORMAL DINING & CARRY-OUT

A Slice of Heaven
 Bagel Bistro
 Beach Bowls
 Big Apple Pizza
 Big Slice Pizza & Wings
 Broadway Bagels & Deli
 Bruno Chocolate Creations
 Bubbakoo's Burritos
 Buffalo Wild Wings
 Burger King
 BurgerFi
 Burny Pit Stop

Charleys
 Cold Stone Creamery
 Cravings
 Culver's
 Dairy Queen
 Dixie Cream Donut Co.
 DQ Grill & Chill
 Dune Dog Cafe
 Einstein Bros Bagels
 Firehouse Subs
 Fredgie's and More
 Hungry Howie's
 IHOP
 Jersey Mike's Subs
 Kilwins
 Little Caesars
 Mama's Pizzeria
 Marco's Pizza
 Max's Gourmet Bagels
 McDonald's
 Olive's Pizza and Tacos
 Orange Julius
 Park Avenue BBQ Grille
 PDQ
 Pistachio's
 Polar Shake
 Popeyes
 Rita's
 Salerno Pizza
 Shakra's Deli
 Signature Sweets
 Smallcakes
 Smoothie King
 SONIC
 Sweet Thang Cookies
 Vic's Pizza Italian Restaurant
 Zaxby's

SPORTS & RECREATION

Bowlero
 BoxLunch
 Crayola Experience
 Elliott Museum
 Florida Oceanographic Coastal Center
 Heathcote Botanical Gardens

Indianwood
 Invincibles Paintball Park
 Jupiter Inlet Lighthouse & Museum
 Mad Science
 Navy Seal Museum
 Painting With A Twist
 Perwinkle Environmental Boat Rentals
 S.L.C. Canoe & Kayak
 Saint Lucie Lanes
 Saints Golf Course, The
 Savannas Recreation Area
 Skate Factory
 St. Lucie County Aquarium
 St. Lucie County Regional History Center
 St. Lucie Mets
 Stix Billiard Club
 Stuart Bowl
 Urban Air Adventure Park
 US 1 Golf
 Vero Bowl
 Wonderstruck Play Studio
 YMCA, The

SERVICES & RETAIL

Bubbles Auto Wash
 Choco's Auto Detailing
 Choco's Carpet & Upholstery Cleaning
 Choco's Pressure Cleaning
 Flowers by Susan
 Goodyear Tire & Service Network
 Hometown Cleaners
 Nutrition Smart
 Sparkle Car Wash & Detailing
 SportClips
 Spot, The
 St. Lucie Jewelry & Coins
 Tires Plus Total Car Care
 Waves Auto Spa
 ZT's Fitness

Plus our National Section and the SaveAround App valid at local locations and across the country!

ALL THIS IN YOUR TREASURE COAST ENJOYMENT BOOK!
 For More Information Contact Enjoyment At: (800) 436-3471 or www.SaveAround.com

**THANK YOU FOR YOUR
GENEROUS DONATIONS:**

In Honor of Faith's Birthday
Faiga & Alan Bennett
~
Stuart Schechter

Donations to the Hevra Fund:

In Memory of Anne Straub
Ferne Barishman

NOTE:

Above donations were received in November

Join us for
Shabbat.



**Michael Cook, DMD
John Harlee, DDS**



10690 So. U.S. Highway #1, Suite A
Port St. Lucie, Florida 34952
(772) 335-3300 • Fax (772) 398-9773
www.southportdental.com

YAHZRZET FUND DONATIONS

From:

Susan Redman
Donald Rose
Hannah L. Pollack
Michael Klatch
Richard R & Karol Levine
Leonard & Vivian Berkman
Leonard & Vivian Berkman
Claudia Rodburg
Beverly Elster
Nadine Wenzel
Arnalda Alwood
Ellis & Mel (Ellyn) Bromberg
Paul & Kathrin Davis
Eileen S Katzman
Alan Portnoy
Howard & Val Sklar
Pamela Edelman
Fran Cooper
Richard R & Karol Levine
Claudia Rodburg
Peter & Ilene Sobel
Peter & Ilene Sobel
Ellis & Mel (Ellyn) Bromberg
Harvey & Rene Safeer
Claudia Rodburg
Meta Thomas
Frank (Chuck) Waldron
Karen Wolf

In Memory Of:

George Redman
Ida Rose
Phillip Sinowy
Julie Klatch
George Levine
Bernard Rashbaum
Charles Fogelman
Rose Teich
Molly Nechamkin
Terry Hutchison
Virgil Alwood
Edith Bromberg
Guenter Fielitz
Sophie Schullley
Gizella Blau
Mildred Sklar
Morton Edelman
Jacob Levin
Larry Levine
Abraham Teich
Edith Sobel
David Sobel
Bernice Cohen
Bernard Haskin
Sally Rodburg
Betty Prepon
Frances Waldron
Beth Lazier

NOTE:

Above donations were received in November

***Music Bingo
January 11th at 6 p.m.***

Join Rabbi Benson
on Thursday mornings at 10 AM
for interesting Torah Study discussions
on Zoom.

We can all learn more about Judaism.
No reservations necessary!!



TREASURE COAST JEWISH FILM FESTIVAL 2024/2025

**Join Us!!
Virtually
or
In Person**

**BURNING LAND
STREAMED JANUARY 3 - 5
LIVE JANUARY 5, 2025
TEMPLE BEIT HAYAM**

Yair, a teenage runaway flees from the law into the contested area of Samaria. He bonds with a group of boys who live on a hilltop, in a shack and who believe all the land belongs to Israel. He is enrolled in a yeshiva where the Rabbi shares their radical views and is dragged into a conflict with the surrounding Arab neighbors

**BOY IN THE WOODS
STREAMED JANUARY 31 - FEBRUARY 2
LIVE FEBRUARY 2, 2025
TEMPLE BETH EL ISRAEL**

Based on the true story of Maxwell Smart It dramatizes the remarkable story of a Jewish boy hiding in the forest of Nazi occupied Poland during World War II. He is forced to fend for himself and then to also care for a baby he finds after the Nazi's kill its mother.

**MATCHMAKING
STREAMED FEBRUARY 28 - MARCH 2
LIVE MARCH 2, 2025
TEMPLE BETH SHALOM**

Moti falls head over heels in love with his sister's friend Nechama, but isn't allowed to date her. She is from a Mizrahi family and he from an Ashkenazi family. To the great despair of both sets of parents and matchmaker he goes to comical lengths to pursue his one true love.

**YANIV
STREAMED APRIL 4 - 6
LIVE APRIL 6, 2025
TEMPLE BEIT HAYAM**

Funding is cut for a High School's musical. A teacher resolves to earn it back by playing a card game called Yaniv. He joins an underground card game run by the Hasidic Jewish community and with the help of another teacher, who is a gambler cheats during the game.

All films shown live will be at 2:30 PM preceded by wine, fruit, vegetables and desserts at 2:00 PM. Charges are \$6.00 per person (payable at door) or \$25.00 per person for the series. Patrons are \$30.00 per person for the series and are recognized in each film program. Streamed showings may be watched any time on dates listed.

PLEASE VISIT OUR AMAZING WEBSITE AT tejff.com

CUT HERE AND RETURN

Checks payable to: TREASURE COAST JEWISH FILM FESTIVAL

Name[s] _____ Phone _____ email _____

Address _____ City _____ State _____ Zip _____

No. Patrons @ \$25 each _____ Total \$ _____

No. Patrons @ \$30 each _____ Total \$ _____

Donation for security \$ _____ **TOTAL \$** _____

MAIL TO:
Joan Weissman -Burton
248 NW Liseron Way
St. Lucie West FL 34986



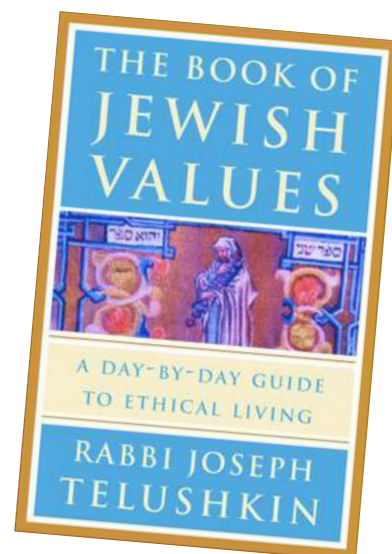
Our Monthly TBEI Library Book Review.....by Sheilah Korinow

Did you ever do something and not know if it was the "right" thing to do? Maybe it concerned a family member or a friend. Or perhaps it involved a decision you made which still "bugs" you even now - a decision that involves your life and those of others. How fortunate we are to have ***The Book of Jewish Values - A Day-By Day Guide To Ethical**

Living* in our temple library. It was written by Rabbi Joseph Telushkin, a name that should sound familiar because I have reviewed several of his other books. Some of his works were written solely by himself, and others were written jointly with individuals such as Daniel Prager. The bulk of his books are non-fiction, but he has also provided readers with books of fiction. On the cover of this particular book that I am reviewing, the following words are perfect to describe what the author has done: "Rabbi Telushkin has combed the Bible, the Talmud, and the whole spectrum of Judaism's sacred writing, to give us a manual on how to lead a decent, kind, and honest life in a morally complicated world." The book is full of major ethical issues that have been around a long time and are still present today. The author acquaints us with what has been said in the past and then offers us 'fresh inspiration and clear guidance.' And this is set up every day in our lives for one year - over 300 issues - and then some space on shabbat, when room is given to review what you have just learned during the previous week. What Rabbi Telushkin has done was to provide us with ethical issues we should first study and then, of course, practice.

Below, I am going to acquaint you with examples with which the book deals. With so many issues, there are bound to be many you would like to read. Here now is a small portion of what the book contains:

- How do you react when you hear a siren?
- What are the highest types of giving?
- When you are tempted to cheat
- Don't play favorites
- Don't make your family afraid of you
- Don't waste time
- Love your wife as yourself
- What to do when you have a bad temper
- Return lost articles
- Give money when times are hard
- Why refraining from gossip is an important challenge
- Fight fairly
- You can learn from the bad to do good
- Love the stranger
- Fight against injustice
- Remember to say thank you
- Don't buy products produced by exploited workers
- Is it fair to enjoy the pleasures of this world while others are suffering?
- When is it ever permitted to lie?
- Help someone laugh
- The requirement if intervention
- Be fair to your enemy
- Don't make unrealistic demands on people
- A Jewish view of hunting
- Feed your animals before yourself
- Don't spread negative, but irrelevant, information about someone you dislike



Halfway through the book I realized there were so many interesting discussions about possible ethical actions in which the reader can get involved, I was not doing justice to the book by not mentioning more topics it contained. Should I limit the information I am giving you in one article, or should I write a two-part article, the second part to be printed in February's Shofar. I became aware that as I read the book, I was pausing to digest and think about what I read. My decision, then, was to run the second part of this book's review next month.

To Be Continued.....



Beth El Memorial Park, Inc.

Located on Old Dixie Highway in Fort Pierce one mile north of Indrio Road. There are four pricing levels for gravesites, all of which include Perpetual Care.

TRADITIONAL PLOTS ARE 5' X 10'

CREMAINS PLOTS ARE 3' X 3'

	TRADITIONAL	CREMAINS
A - Husband, wife, dependent children under 22 who are members of Temple Beth El Israel.	\$1850.	\$1000.
B - Members of other Temples in the area.	\$1850.	\$1000.
D - For non-members.	\$2450.	\$1200.

Add \$50. filing fee per sale not per grave site & \$195. for Perpetual Care

Note: For the purpose of this pricing, a member is one who has been a paid up member of their Temple for a period of more than one year. Opening and closing of 5 x 10 grave is \$1200 with a tent & chairs, opening and closing of 3 x 3 grave is \$450 without tent & chairs or \$750 with tent & chairs.

Add additional charge for Sunday & Holiday burials of \$300 for 5 x 10 and \$250 for 3 x 3. No burials on Shabbat or Jewish Holidays.

For more information please call: Bob Polakow (772) 807-3355 or Harold Schwartz (561) 635-5237

THE DIRECT LINE FOR THE CEMETERY IS: 772-882-3601
FOR ONLINE INFORMATION: BEMPTC.ORG

Save the dates...

January 11th - Music Bingo
February 5th - Recovery Grill
February 18th - Sisterhood Card Party

**...be a part of our fundraising events
and support TBEI
while enjoying our programs**



\$35

The New Enjoyment Books are here
They are on sale in the Judaica Shop

If you take pictures at any of our functions, please send them to me so we can all share your photos.
Send them to: faithkrumenacker@comcast.net



Life Cycle Events ~ Get Well Wishes and speedy recovery to our Temple family & friends:

David Bialick
Carol Seigel

David Austin
Miriam Cassel
David Dickter
Ashleigh Mc Gregor

Doris Haendel
Mark Stuart

Michael Becker
Amy Conoly
Marc Ginsberg
Cookie Romeo

Carole Mortman
Nadine Wenzel

Darlene Brofman
Jeffrey Farenback-Brateman
Mara Kupperman
Jackson T. Winn II

Yates Funeral Home & Cremation Services

Family Owned and Operated
Serving the Jewish community of the Treasure Coast
For over 75 years

Now with three convenient locations to better serve you

Port St. Lucie
7951 S. US1

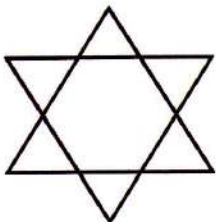
Port St. Lucie
526 SW Port St. Lucie Blvd.
(Just west of the Turnpike)

Fort Pierce
1101 S. US 1

Fort Pierce (772) 461-7000

Port St. Lucie (772) 878-2300

www.YatesFuneralHome.com



YATES
FUNERAL HOME
& CREMATION SERVICES

JANUARY YAHRZEITS

1/3 - 1/4

Armin Baker
 Tillie Baron
 Esther Beauchamp
 Andrea L. Camras
 Frances Cohen
 Sandra Cohen
 Beverly Flax
 Sadye Gerzog
 Victor Halper
 Lillian R. Kanarek
 Ida Katzman
 Arnold Harry Kroitor
 Dan "Pop Pop" Lake
 Harry Lewen
 Irma Meinhardt
 Shirley Morin
 Stephen Orne
 Benjamin Pinkowitz
 Helen Popper
 Dr. Victor Robinson
 Dr. William Robinson
 Eugene Rose
 Sally Davidson Rothstein
 Judi Schneider
 Saul Schulley
 Joe Selkin
 Ida Shatkin
 Herb Silverstein
 Joyce Starr
 Harry Stein
 Isadore Stein
 Sidney Suss
 Edward Weinerman
 Bertram Weinshank
 Dr. Melvin Wolkowsky

1/10 - 1/11

Robert Abramson
 Ida M. Baum
 Arthur Block
 Anna Blumer
 Harry Bruntl
 Abraham Caplin
 Geraldine Cohen
 Myron Mayer Cohen
 Robert Cohen
 Irene Derman
 Marjorie Epstein Smith
 Sally Goldberg
 Gilbert Greene
 Sylvia Kale
 Harry Kent
 Siegfried Kosiner
 Jacob Lirtzman
 Bella Mandery
 Reuben Meadow
 Joan Portnoy
 Isaac Schneider
 Gail Tobin
 Nathalie Van Dernoot
 Harry Wiener
 Leah Williamson
 Scott Winnick
 Harvey Wolfgang
 William Zahler



In Loving Memory

1/17 - 1/18

Albert Adler
 Elias Bergman
 Estelle Bernstein
 Marks Bialick
 Louis Bindman
 Rebecca Brener
 Gilbert Brodtkin
 Rose Cagan
 Fannie Friedman
 Alexander Goldstein
 Janet Hoch
 Morris Jacobs
 Samuel Klatch
 Sandu Kroitor
 Morris Leinkram
 Rabbi Charles Lesser
 Samuel Meyers
 Ruth Miskin
 Sylvia Pearl
 Rene' Perlaizen
 Claire Rosichan
 Ethel Rothenberg
 Harvey Rubin
 Phillip Solomon
 Bella Waldman
 Lewis Weinberg
 Pauline Weiss
 William Wolf
 Sam Wos-

1/24 - 1/25

Richard Belmont
 Dorothy Epstein
 Arnold Gabel
 Moshe Keyzerman
 Leon D Lazer
 Samuel Mastroff
 Martin Morrison
 Ben Puchaski
 William Rothenberg
 Arthur Rubin
 Malcolm Schwartz
 Mincha Ruchel Schwartz
 Eva Spitolnick
 Marcos Steisel
 Bertha Tannenbaum
 Irving Teitelbaum
 May Van Dernoot
 Rebecca Weinstein
 Bernard Wilker
 Molly Wistreich
 Harry Wynters
 Murray Zimmerman

Yahrzeit

Observance is an annual reminder of the date of death of a loved one and a tribute to the influence they made on our lives.



APPROPRIATE PRACTICES:

- *Kaddish at Synagogue*
- *Memorial candle at home*
- *Donation to Synagogue in tribute to memory of deceased loved one*

Please note....

Kaddish for your loved one will be observed at the services on the Friday & Saturday **before** the Yahrzeit date.

MARTIN FUNERAL HOME

*Family owned and operated serving the families of Port St. Lucie,
Fort Pierce, Jensen Beach, Palm City, Stuart and Hobe Sound
Burials, Ship-outs & Cremation Services*



Susan King, L.F.D.
Owner and Funeral Director

*We are attentive to the needs of the bereaved
and to the strong traditions
of the Jewish People.*



**Martin
Funeral Home
& Crematory**

Port St. Lucie Chapel
714 SE St. Lucie Blvd.
Port St. Lucie, FL 34984
(772) 873-3733

Fax (772) 873-1429
Located on the SE Corner of
Port St. Lucie Blvd. and Floresta Blvd.

Stuart Chapel
961 S Kanner Hwy
Stuart, FL 34994
(772) 223-5550

Fax (772) 223-5101
Located on the SE Corner of
Kanner Highway and US Highway 1



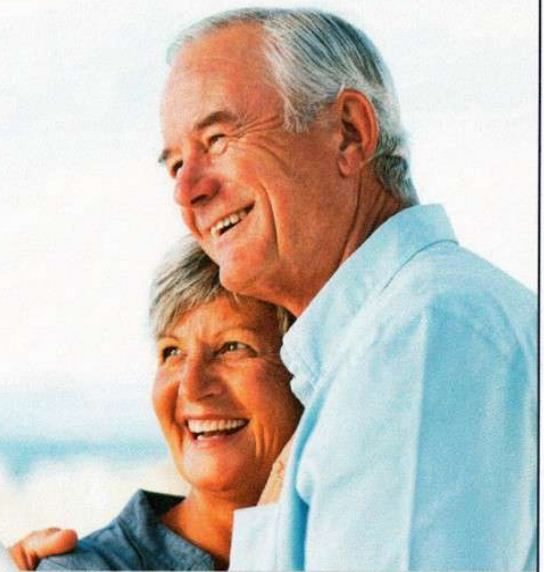
TREASURE COAST DERMATOLOGY
Specializing in the Treatment of Skin Cancer

**TRUST US
WITH THE HEALTH
OF YOUR SKIN**



TIM IOANNIDES, MD

- Board Certified by the American Board of Dermatology
- Voluntary Associate Professor, University of Miami School of Medicine
- Fellow, American Academy of Dermatology
- Fellow, American Society for Mohs Surgery



St. Lucie West

772.878.3376

Fort Pierce

772.464.6464

Vero Beach

772.226.7218

www.TCDermatology.com



*Join us at 11:30 a.m. on
Thursday, January 9th
Dr. Kurt*

Will do a presentation on CPR

We will serve bagels & coffee.

*This meeting is open to the entire
congregation.*

Help support the Temple.....

*Join us and participate in our
programs*



**STAND UP
TO JEWISH
HATE**

**PICK UP YOUR BLUE PIN
WHEN YOU'RE IN THE TEMPLE**

PLEASE.....

Notify the Temple office or call the Rabbi if you are aware a fellow congregant is ill, or if a family member is ill, or has had an accident, or is in need of the Rabbi's services. The Rabbi can only help if he is informed that he is needed.



For us, there is no greater responsibility than helping to honor and preserve a life's story. We believe every life should be commemorated.

- Adhering to Jewish Traditions.
- Part of the Nation's Largest Network of Jewish Funeral Homes.
- Traditional Burials, Transfer from State and Cremations.



AYCOCK FUNERAL HOMES

Aycock Funeral Home
Floresta Drive
1504 SE Floresta Drive
772.878.0049

Aycock At Tradition
Life Celebration Center
12571 SW Tradition Parkway
772-618-2336



TEMPLE BETH EL ISRAEL DONATION OPPORTUNITIES

Donor's Name _____

Address _____

City _____ State _____ Zip _____ Phone _____

Payable to TBEI:

\$ _____ Building Reserve Fund (to help cover expenses for repairs to equipment)

\$ _____ Capital Improvement Fund (for major improvements)

\$ _____ Flower Fund (for flowers on the Bima for Shabbat & Holidays)

\$ _____ General Fund (for general operations)

\$ _____ Hevra Fund (provides meals of consolation for families in mourning)

\$ _____ Kiddush Fund (provides refreshments after Shabbat morning services)

\$ _____ Leaf on the Tree of Life:

Bronze \$100 Silver \$150 Gold \$200

In remembrance of a special person or event

Forms are available in the Temple office

\$ _____ Library Fund (for the purchase and upkeep of library books and equipment)

\$ _____ Memorial Plaques - \$200 - in memory of a loved one

Forms are available in the Temple office

\$ _____ Religious School Scholarship Fund

(provides need-based scholarships for students attending our religious school)

\$ _____ Yahrzeit Fund (commemorates the anniversary of the death of a loved one)

\$ _____ Music Fund (to provide musical accompaniment on Holidays and events)

\$ _____ Security Fund (to offset the cost of the Security Guard at TBEI)

\$ _____ Special **Holocaust Torah MST Fund**

Payable to Rabbi's Discretionary Fund:

\$ _____ For the use of the Rabbi for educational/charitable projects

Payable to TBEI Sisterhood:

\$ _____ Ida Rubin Book of Life (to send cards for any occasion (birthday, get well, etc)

\$ _____ Oneg Shabbat Fund (provides refreshments after Friday night Services.

PLEASE INDICATE THE NAME OF THE FUND RECEIVING YOUR DONATION ON THE MEMO LINE OF YOUR CHECK

January 2025 1 Tevet 5785 - 2 Shevat 5785

Sunday Monday Tuesday Wednesday Thursday Friday Saturday

Save the dates:
February 5th - Recovery Grill
February 8th - Julia Argenziano Bar Mitzvah
February 18th - Sisterhood Card Party
March 7th - Shabbat Across America

1	2	3	4
<p>1 1 TEVET</p> <p>Chanukah - Day 7 Rosh Chodesh Tevet - Day 2 New Year's Day</p> <p>Happy New Year</p>	<p>2 2 TEVET</p> <p>Chanukah - Day 8 Weight Watchers 6 p.m.</p> <p>WW</p>	<p>3 3 TEVET</p> <p>5:25 Friday Night Service 7:30 p.m.</p> <p>Shabbat</p>	<p>4 4 TEVET</p> <p>Vayigash Saturday Morning Service 10 a.m.</p> <p>Scroll</p>
<p>5 5 TEVET</p> <p>Sanctuary Rental</p>	<p>6 6 TEVET</p> <p>Bingo Doors open at 5 p.m.</p> <p>BINGO</p>	<p>7 7 TEVET</p> <p>Sisterhood Board Meeting 10 a.m. Brotherhood Board Meeting 7 p.m.</p>	<p>8 8 TEVET</p> <p>Weight Watchers 8 a.m. and 9:30 a.m.</p> <p>WW</p>
<p>9 9 TEVET</p> <p>Brotherhood Program 10 a.m. Weight Watchers 6 p.m.</p> <p>WW</p>	<p>10 10 TEVET</p> <p>5:30 Friday Night Service 7:30 p.m.</p> <p>Shabbat</p>	<p>11 11 TEVET</p> <p>Veyechi Saturday Morning Service 10 a.m. Music Bingo 6 p.m.</p> <p>Scroll Music</p>	
<p>12 12 TEVET</p> <p>Sanctuary Rental</p>	<p>13 13 TEVET</p> <p>Bingo Doors open at 5 p.m.</p> <p>BINGO</p>	<p>14 14 TEVET</p> <p>Fundraising Meeting 6 p.m. Temple Board Meeting 7 p.m.</p>	<p>15 15 TEVET</p> <p>Weight Watchers 8 a.m. and 9:30 a.m.</p> <p>WW</p>
<p>16 16 TEVET</p> <p>Weight Watchers 6 p.m.</p> <p>WW</p>	<p>17 17 TEVET</p> <p>5:35 Friday Night Service 7:30 p.m.</p> <p>Scroll Shabbat</p>	<p>18 18 TEVET</p> <p>Shemot Saturday Morning Service 10 a.m.</p> <p>Scroll</p>	
<p>19 19 TEVET</p> <p>Sanctuary Rental</p>	<p>20 20 TEVET</p> <p>Martin Luther King Day Bingo Doors open at 5 p.m.</p> <p>BINGO</p>	<p>21 21 TEVET</p> <p>Sisterhood General Meeting 11:30 a.m. Rental Meeting 6 p.m.</p>	<p>22 22 TEVET</p> <p>Weight Watchers 8 a.m. and 9:30 a.m.</p> <p>WW</p>
<p>23 23 TEVET</p> <p>Weight Watchers 6 p.m.</p> <p>WW</p>	<p>24 24 TEVET</p> <p>5:40 Friday Night Service 7:30 p.m.</p> <p>Shabbat</p>	<p>25 25 TEVET</p> <p>Va'era Saturday Morning Service 10 a.m.</p> <p>Scroll</p>	
<p>26 26 TEVET</p> <p>Sanctuary Rental</p>	<p>27 27 TEVET</p> <p>Bingo Doors open at 5 p.m.</p> <p>BINGO</p>	<p>28 28 TEVET</p>	<p>29 29 TEVET</p> <p>Weight Watchers 8 a.m. and 9:30 a.m.</p> <p>WW</p>
<p>30 1 SHEVAT</p> <p>Rosh Chodesh Shevat Weight Watchers 6 p.m.</p> <p>WW</p>	<p>31 2 SHEVAT</p> <p>5:46 Friday Night Service 7:30 p.m.</p> <p>Shabbat</p>	<p>Happy New Year!!</p> <p>Happy New Year</p>	



TEMPLE BETH EL ISRAEL
551 SW Bethany Drive
Port St. Lucie, FL 34986
<http://www.templebethelisrael.org>



OR CURRENT RESIDENT



Judaica Shop

Call for an appointment

Linda Chazin 871-1205
Faith Krumenacker 561-315-4281