

The Shofar



Temple Beth El Israel

551 SW Bethany Drive
Port St Lucie, FL 34986
phone 772-336-2424

April 2023
NISSAN / IYAR 5783

SAVE THE DATES...

April 5th Temple Seder
~~~~~

April 14th Yom HaShoah Service  
~~~~~

April 15th MST860 Holocaust Torah
Celebration

Please note all events are subject to cancellation
due to circumstances beyond our control
and health & safety concerns

Rabbi

Bruce Benson

President

Faith Krumenacker

Vice President

Susan Schlein

Co -Treasurers

Tobi Rettig

Sue Klatch

Recording Secretary

Arlene Schweitzer

Sisterhood Co-Presidents

Eve Epstein

Evelyn Poulter

Brotherhood President

Jeff Kreiss

Board of Directors:

Lydia Bauman

Gary Cooper

Rickie Leiter

Sue Schwartz

Past President:

Lilly Beauchamp

From the Desk of Rabbi Bruce Benson

April is the month of many special moments. Within one month we will celebrate Pesach and the unique meal known as the seder. Many of us have wonderful memories of singing Dayenu, hunting for the elusive afikomen, counting the days till we could have bread again, showing off how to eat a tuna sandwich on matzah and not dropping most of it on the floor at school lunch.

Then it turns far more serious as we observe Yom HaShoah, the commemoration of the Holocaust and on the 14th and 15th, the entrance walk of

MST860 with all the pride we can accumulate surrounded by many members of the community walking with us as the orphan Torah scroll of Czechoslovakia takes its place as part of this Jewish community during the service of remembrance of the Shoah. The following week we celebrate Israel Independence Day.

It is quite a month for all of us. We have started a new adult education class and invite you to join. Yoga classes have begun, and the classes are helping many achieve strength, dexterity and confidence. Come, try it!

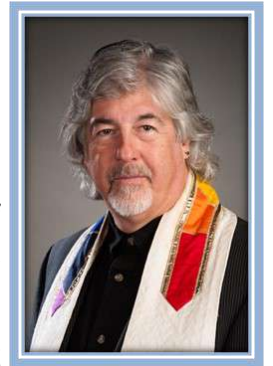
We are a community beginning a climb out of Covid-19 lethargy and we are reclaiming our position as the "go to" destination for the Jewish community of St. Lucie County. TBEI is on the move and we hope you will join us as we march the Torah to its new home on Shabbat morning April 15, and equally that you will join in our march to new resilient strength as the hub of a reinvigorated, welcoming, positive Jewish community with a vision, a purpose and a plan.

We hope you can help us, join with us as we move forward, matzah in hand, reliving the beginning of the trek from Egypt our ancestors took to create a new vision. I look forward to greeting each of you as we march forward.

In the meantime, Oy! Gefilte fish!! Oy matzah!!! Oy vey! More matzah. Come - be part of it all.

First seder is Wednesday April 5. Whether you celebrate at home or here with us in the Temple, Chag Sameach.

Rabbi Bruce



The President's Communication Corner

ביחד

April is going to be a busy month...

Beginning with the Temple Seder on April 5th, the Yom HaShoah service on April 14th and our much anticipated celebration on April 15th when we welcome our Holocaust Torah to our building with a community-wide event. Let's all support our Temple by attending our functions.

Thank you to all of you that have so generously donated to both the Holocaust Torah fund and the Ukraine fund we have been collecting for. We will continue to collect as long as there is a need for our help.

Our recent Sisterhood Neil Zirconia tribute show was enjoyed by all who attended.

*Please save the date for our next semi-annual **Congregation meeting on May 13th.** The details for this meeting will be sent out shortly.*

Wish everyone a Happy Passover!!

We're in this together, let's stay healthy and safe together.

Faith



Rabbi Benson's Cell Phone Number is: 561-601-8294



Our officer's phone numbers:



Faith Krumenacker ~ President

772-343-7639

Susan Schlein ~ Vice President

772-878-0717

Tobi Rettig/Sue Klatch ~ Co-Treasurers

772-971-5649/772-336-7175

Arlene Schweitzer ~ Recording Secretary

305-965-2155

Evelyn Poulter & Eve Epstein ~ Sisterhood Co-Presidents

772-812-112/772- 807-4713

Jeff Kreiss ~ Brotherhood President

772-336-0427



You're Invited!!!!

**Join Rabbi Benson
on Thursday mornings at 10 AM
for our Torah Study class & discussion on ZOOM**

SISTERHOOD NEWS

Greetings from the Sisterhood!

As I write this spring is finally here.

Thank you to everyone that participated in our Shabbot Across America potluck, it was an enjoyable and delicious dinner.

Once again, and back by popular demand, our recent show on March 18th with Neil Zirconia in his tribute to Neil Diamond, was extremely entertaining and we had a great time. Thank you to Sue and Ferne and committee for a lovely dessert after the show.

By the time you read this our Women's Seder will have come and gone. I am sure you enjoyed it and again, thanks to Sue Schlein and her "crew".

Remember, the Temple's Seder is April 5th. Tickets are still available if you call the Temple by April 1st.

Please make every effort to join us on April 14th, as we commemorate Yom HaShoah and on the 15th as we welcome our Holocaust Torah to TBEI. Please join us for our upcoming events.

We mourn the passing of Sheila Marks longtime member of both Sisterhood and TBEI.

Wishing everyone a happy Passover.

Evelyn and Eve



OUR SIMCHA CAKE

CELEBRATE YOUR HAPPY OCCASIONS IN THE SHOFAR EACH MONTH.

SIMCHAS & GREETINGS TO SHARE:

**HAPPY BELATED
85TH BIRTHDAY
MARCH 22ND
TO NAOMI SAPPHIRE
FROM YOUR FRIENDS AT TBEI**

**HAPPY BELATED 80TH BIRTHDAY
MARCH 23RD
MARYANN POLK
FROM YOUR BUDDIES
DORIS & FRANCINE**

**HAPPY PASSOVER
TO OUR TEMPLE
FAMILY & FRIENDS
FROM
YOUR BOARD OF DIRECTORS**

BROTHERHOOD NEWS :



Watch the mail ~ ~ ~

Yom HaShoah Memorial Candles were sent out.

Be a part of the Brotherhood Yom HaShoah commemoration at our service on April 14th.

Hope to see everyone at Friday Night Services.

Jeff Kreiss, President

**Join the Brotherhood and our Temple family
as we march with our MST860 Holocaust Torah
on Saturday, April 15th.**

**We will be gathering
at the Seacoast Bank Building at 9:30 a.m.**

Join us for
Shabbat.



**For more information about
what's happening in the Temple
go to templebethelisrael.org**



*If you aren't getting
your emails from the Temple...
Check your spam folder
and put our email information
into the address book
in your computer.*



CARPETS Etc
Carpet Vinyl Tile Wood
Rob Sharot, Owner
1374 SE Huffman Road 270 NW Peacock Blvd., Ste. 107
Port St. Lucie, FL 34952 Port St. Lucie, FL 34986
info@carpetsetcpsl.com www.carpetsetcpsl.com
772-878-4707 • FAX: 772-878-4767

JOIN US APRIL 15 TO WELCOME THE TBEI HOLOCAUST TORAH

Since January monthly articles in the Shofar have addressed Discrimination, Antisemitism, the Holocaust, the annihilation of the Jews of Bavaria and Moravia and the rescue of the Czech Holocaust Torahs. All of this has been an introduction to this month's march as part of the ceremony to welcome Czech Holocaust Torah MST860 to Temple Beth El Israel. On April 14th we will commemorate Yom Hashoah with a special Service. Brotherhood will continue their program of providing Yom Hashoah Memorial Candles to Temple members and guests.

On April 15th we will carry the Torah from the Seacoast Bank parking lot, down Bethany Drive to the Temple. We will be accompanied by invited guests from the community, City and County law enforcement and private security. Those who cannot make the walk are encouraged to be at the Temple entrance by 10:30 to welcome the procession. Once inside the Temple we will have a special Service comprised of music, prayers, responsive readings and messages all designed to bring the community and our newest member together and to spread the message:

This abomination has happened more than once to humanity, and can happen again if we are all not vigilant in opposing those who would divide us with hateful rhetoric.



*Our Holocaust Torah Cover
and the Yad that has been designed
especially for this Torah.*





April Birthdays

6 Ilene Sobel
14 Andre' Tarraf
16 Susan Redman
21 Eleanor Berman
25 Murray Green
26 Lewis Honig
28 Lynne Cohn

C
O
N
G
R
A
T
U
L
A
T
I
O
N
S

April Anniversaries



2 Janet & Gary Soloshatz
16 Susan & David Schlein
18 Jaquie & Matthew Fromer
29 Jill & John Argenziano

מזל טוב

If you don't see your birthday or anniversary listed in the Shofar contact the Temple office and ask to have your special day included.

חג שמח

PLEASE.....

Notify the Temple office or call the Rabbi if you are aware a fellow congregant is ill, or if a family member is ill, or has had an accident, or is in need of the Rabbi's services. The Rabbi can only help if he is informed that he is needed.



A Helping Hand and a Gentle Heart

Assisting Families Like YOURS Since 1990

Bathing/Dressing	Companion/Homemaker
Meal Preparation	Light Housekeeping
Alzheimer/Parkinson Care	Errands & Shopping
Toileting	Medication Reminder
Nurses Aides	RN Case Management

Non Emergency Wheelchair Transport

24 Hour Service 7 Days a Week
Licensed & Insured

772-807-8666

www.grannynannies.com
State License #NR30211265

SAVE THE DATE

*Our next semi-annual
Congregation meeting
will be on Saturday evening,
May 13th, 2023*

*Save the date and watch for
further details about this meeting.*

Please make every effort to attend.

*We need to have a quorum to conduct the
meeting.*





The Brotherhood is once again distributing Yom HaShoah candles in anticipation of our service commemorating this unforgettable event.

Join us on Friday, April 14th at 7:30 p.m. for our Yom HaShoah service and light your yellow candle on Tuesday, April 18th in memory of all who perished.



*Upcoming Friday night Torah service
will be on the following date:*



May 5th

Wednesday, April 26th

PASSOVER FRUITED FARFEL KUGEL

(Sue Schlein's delicious recipe)

4 cups matzo farfel
1 cup apple juice
6 eggs
3/4 cup sugar
1 stick melted margarine
1 can crushed pineapple - drained
1 can peaches (drained) plus 2 teaspoons juice
1 can mandarin oranges - drained
1 cup seedless raisins
Rind of 1/2 lemon plus 2 teaspoons juice
1/4 teaspoon salt
1 teaspoon cinnamon
Vanilla



Place farfel in large bowl
Add 1 cup boiling apple juice, beat eggs, add sugar and margarine, beat again.
Add egg mixture to farfel, add remaining ingredients and mix.
Heat 2 tablespoons oil in a casserole dish.
Pour pudding into hot casserole dish.
Bake 1 hour at 335°.



YOM HASHOAH

April 18, 2023



Light a yellow candle
to remember those who perished.

NEVER AGAIN! "To forget would not only be dangerous but offensive, to forget the dead would be akin to killing them a second time....Not only are we responsible for the memories of the dead, we are responsible for what we are doing with these memories. For the dead and the living, we must bear witness."

Holocaust Survivor Elie Wiesel

Seventy-seven years have passed since the Nazi concentration camps were liberated and the Holocaust that claimed the six million Jewish lives came to an end. To ensure that the six million did not die in vain and that the Holocaust never happens again, Temple Beth El Israel once again will join Jews throughout the United States and around the world by participating in the **Yom Hashoah Yellow Candle Holocaust Commemoration** to keep alive the memories of the Six Million who perished.

The Yom HaShoah Yellow Candle is modeled after a traditional Jewish Yahrzeit memorial candle that burns for 24 hours during periods of mourning. The wax reminds us of the yellow arm bands that Jews were forced to wear during the Nazi regime.

As the years pass, the memories of those who were victims in this ultimate hate crime must not diminish. We encourage your family to light a yellow candle on the night of Wednesday, April 27, 2022, and join as thousands of Jewish families light their Yom HaShoah candles. This action will continue to increase the awareness of the Holocaust and help perpetuate our commitment to our people – particularly, since recently, with the marked increase of anti-Semitism.

The memory is important! The number of Holocaust survivors is rapidly diminishing with each passing day. As we lose this precious link, those who deny that the Holocaust happened gain strength. Sadly, a study conducted last year reported that 22 percent of millennials (23 to 38 years old) say they haven't even heard of the Holocaust.

Temple Beth El Israel Brotherhood will distribute a Yom HaShoah yellow candle to each Temple family. Please join us in lighting this candle in memory of our six million brothers and sisters who perished.

In addition, we encourage you to attend our Holocaust Memorial Yizkor Service led by Rabbi Benson on Friday, April 14th, 2023, at 7:30 p.m. Please mark your calendar and save the date.

Thank you for your participation,

Temple Beth El Israel Brotherhood

TREASURE COAST JEWISH FILM FESTIVAL

“GREENER PASTURES”

STREAMING APRIL 14th - 16th

DISCUSSION WITH THE RABBIS ON APRIL 16TH AT 4:30 PM

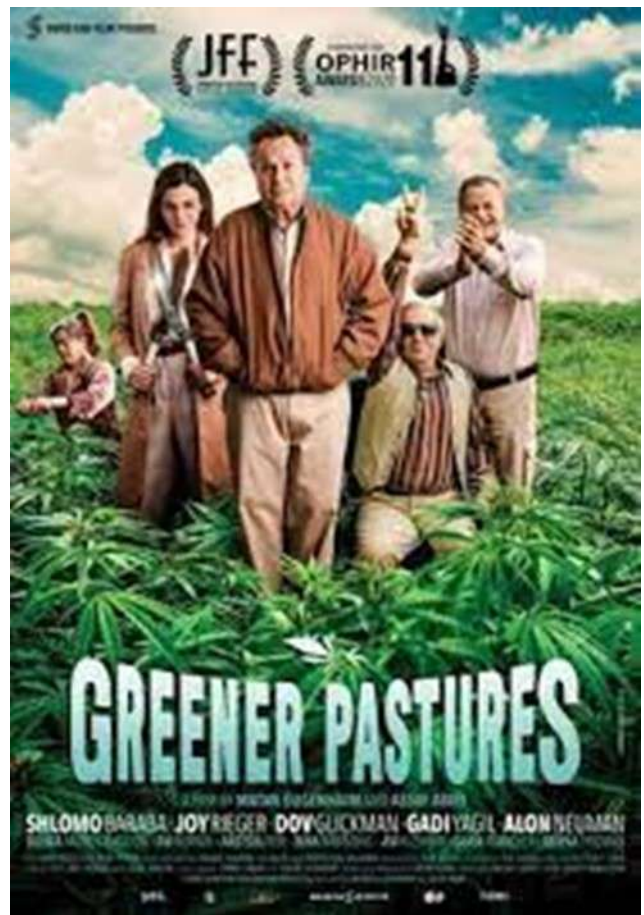
CONTACT LEONARDCB5665@GMAIL.COM

DONATIONS ARE 6.00 PER PERSON

DOV IS A WIDOWER WHO IS SENT
TO LIVE IN A NURSING HOME
AND FEELS HE IS IN JAIL

HE DREAMS OF REBUYING
HIS OLD HOME.

DOV DISCOVERS
YOU CAN BUY CANNABIS
LEGALLY IN THE HOME
AND THIS IS HIS WAY OUT.



CRAIG JEFFRIES
WEALTH MANAGEMENT GROUP, LLC

JEFF EMMELUTH, AAMS®
Managing Partner
Financial Advisor

1055 SE Ocean Blvd.
Stuart, FL 34996

772.210.2651 office
772.210.2671 fax

jeff.emmeluth@jwcemail.com

SARA CROMBIE
BROKER/OWNER



NEW WAVE
REAL ESTATE GROUP
772.631.0960

YOUR FULL SERVICE REAL ESTATE COMPANY

Harriet G. Shapiro, CPA

Gillman, Shapiro & Dilleuth, P.A.
Certified Public Accountants

2608 SE Willoughby Blvd.
Stuart, FL 34994
772 220-6655
772 220-2151 (FAX)

6530 S Kanner Hwy.
Stuart, FL 34997
772 287-1744
(FAX) 772 233-4316

Cell 772-341-2280
harriets@gillmanshapirocpas.com

Save the dates

April 5th ~ ~ Temple Seder

April 14th ~ ~ Yom HaShoah Service

April 15th ~ ~ Holocaust Torah
Community event

May 6th ~ ~ Guest speaker & video
after our Saturday morning service

May 20th ~ ~ Trivia

May 26th ~ ~ Kugel Bake off

June 11th ~ ~ Spaghetti/Bingo

Be a part of our Temple family
Participate in our functions

Friday night Candle Lighting Schedule:



April:

7	7:22 pm
14	7:25 pm
21	7:28 pm
28	7:32 pm

Lighting the Shabbat Candles:

ברוך אתה יי אלהינו מלך העולם
אשר קדשנו במצותיו וצונו
להדליק נר של שבת: (אמן)

Baruch ata Adonay, Eloheynu melech ha-olam, asher kid-shanu b'mitz-votuv, v'tzivanu l'hadlik nayr shel Shabbat.

Praised are You, Lord our G-d, King of the universe, who has taught us the way of holiness through the Mitzvot, and enjoined upon us the kindling of the Shabbat lights.



Our Shofar advertising year begins with the September issue. If you or anyone you know would like to advertise in our monthly newsletter please contact the Temple office for details.

Rates are as follows per year:

FULL PAGE.....	\$325.00
HALF PAGE.....	\$200.00
QUARTER PAGE.....	\$145.00
BUSINESS CARD.....	95.00
ONE-TIME FULL PAGE.....	\$ 40.00 / ISSUE

Print-ready ads must be submitted no later than August 10th for the September issue. Please send your ad to:

faithkrumenacker@comcast.net



TREE OF LIFE AND MEMORIAL PLAQUES

Bronze - \$100
Silver - \$150
Gold - \$200

Memorial Plaques - \$200
Call the Temple office @ 336-2424
to reserve a leaf or memorial plaque



THE KARP LAW FIRM, P.A.

Elder Law, Estate Planning, Wills & Trusts,
Asset Preservation, Trust Administration,
Medicaid & VA Benefits Planning, Probate,
Estate Litigation, Elder Law/Probate Mediation

"Your Peace of Mind is Our Priority"



Joseph S. Karp
Florida Bar Certified Elder
Law Attorney,
FL & NY Bar



Jonathan D. Karp
Florida Estate Planning
& Elder Law Attorney

New Address

1860 SW Fountainview Blvd., Suite 100
Port St. Lucie, FL 34986
Web: www.karplaw.com

(772) 343-8411 (800) 893-9911



This past month:

Talia Carner was our guest speaker at the Sisterhood/NCJW joint meeting

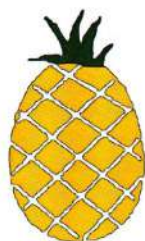


*Rabbi Benson
read
the Megillah
on Purim*



*We had a wonderful show starring Neil Zirconia
performing and joined by some of our audience*





HAISLEY

Funeral & Cremation Service

Now with two Locations

3015 Okeechobee Road, Fort Pierce, FL 34947, 772-461-5211

2041 SW Bayshore Blvd., Port St. Lucie, FL 34984, 772-879-1000

Celebrating Life...Our Family Understands Your Loss



TREASURE COAST DENTAL

RESTORATIVE, COSMETIC & IMPLANT DENTISTRY

SERVING THE TREASURE COAST FOR OVER 25 YEARS

"I know that every second I am in their office, and in their care, I am in the best professional dental office in the area. Everyone was proud and genuine. You will also find patience plus. My dental work from Dr. Squier has changed my whole look and outlook. I am a 'smiler', and now I have a beautiful smile! Outstanding in every aspect."

-Andrea W



Dr. Rachel Schultz Squier
Board-Certified Prosthodontist

- Harvard University educated
- University of Connecticut

TBEI Members & Friends

**FREE DENTAL
CONSULT***

www.tcdentalpros.com • (772) 337-2338

Our Procedures:

Fillings

Dental Cleanings

Crowns & Bridges

Extensive Bridgework

Porcelain Veneers

Dental Implant Placement &
Restoration in the same office

Fixed Implant Bridgework

Teeth-in-a-Day™

Teeth-in-an-Hour™

Implant-Secured Dentures

Premier Customized Dentures

Precision Partial Dentures

Teeth Whitening

YAHREZIT FUND DONATIONS

THANK YOU FOR YOUR GENEROUS DONATIONS:

Donations to the General Fund:

Eili & Jenny Arzi
~
Richard & Pamela Holmes

Donations to the Holocaust Torah Fund:

Howard Medow
David Flecker
Barbara Zimring Lyons
Richard R & Karol Levine
Dr. Lindsey Matheson
Hannah L. Pollack
Fran Cooper
Hannah L. Pollack
Lesser, Lesser, Landy & Smith PLLC
Dr. Donald Rudolf
Leonard C. & Vivian R Berkman
Robert Kahan
Alan & Rachel Sampson

NOTE:

Above donations were received in February

From:

Claudia Rodburg

Susan Schlein
Rochelle Lustig
Martin & Cindy Cohen
Peter & Ilene Sobel
William & Ferne Barishman
Harvey & Rene Safeer
Sandra Lippman

Susan Redman
Marilyn Cloman
Leonard & Eve Epstein
Dorothy Kamm
Fran Cooper
Raymond Feldman & Arona Winer

Phyllis Cypress
Doris Haendel
Richard R & Karol Levine
Joe Morabito
William Weinshank

Karen Wolf

In Memory Of:

Naomi Karr
Jacques Teich
Gladys H. Schnier
Henrietta Bergman
Joseph Sosneck
Florence Rice
Celia Barishman
Alan Slepoy
Gertrude Kupfer
Irving Kupfer
Nan Rubin
Eileen Cohen
Ted Stockel
Joseph Kampf
Minnie Levin
Abraham Berkowitz
Sonia Feldman
Renee Cypress
Art Haendel
Doris Schiffman
Jacqueline Morabito
Honey Sidorsky
Connie Yeglinski
Jacob Lazier

NOTE:

Above donations were received in February

Join Rabbi Benson
on Thursday mornings at 10 AM
for interesting Torah Study discussions
on Zoom.
We can all learn more about Judaism.
No reservations necessary!!



Michael Cook, DMD
John Harlee, DDS



10690 So. U.S. Highway #1, Suite A
Port St. Lucie, Florida 34952
(772) 335-3300 • Fax (772) 398-9773
www.southportdental.com



Some of our Ohel Moed students made
Hamantaschen for Purim this month.



WHY A HANUKKAH STAMP IN APRIL?

No, Hanukkah has not been moved to April -- but the U.S. Hanukkah stamp issued in 2022 has an important connection to a Temple Beth El Israel event this month.

The stamp features a beautiful design from a wall-hanging created by Jeanette Kuvin Oren, one of the world's foremost contemporary artists specializing in Judaic art. And we are proud that the cover for TBEI's Holocaust Torah, which we will welcome to the Temple in a special march and program on April 15, was also designed by Kuvin Oren!

Since 1984, she has been commissioned by more than 450 synagogues, community centers, day schools, and camps across the United States, Canada, South America, and the Caribbean. She is best known for one-of-kind Torah covers, Ark curtains, wall hangings, glass Ark doors, mosaics, stained glass, chuppahs, ketubot, and paper cuttings. Kuvin Oren also designs synagogue interiors.

For the stamp, her original fiber-art was hand dyed, appliqued, and quilted to form an abstract image of a hanukkiyah. Kuvin Oren says the blue and purple colors represent the sky, the greens and browns represent the earth, and the yellows and oranges represent Hanukkah itself. She says "I like to think that this stamp honors the joy and light of Hanukkah, love of Judaism, and the beauty of stamps." This is the eighth new design since the first U.S. Hanukkah stamp was issued in 1996.

Kuvin Oren worked closely with Rabbi Benson and our Holocaust Torah committee to design a unique and moving image for the cover that will be a very special and meaningful addition to TBEI's collection of ritual art objects. We can't wait to see it when it's revealed to the Temple community and public for the first time on April 15!



*Jeanette Kuvin Oren designed the 2022 U.S. Hanukkah stamp,
and the Torah cover for TBEI's Holocaust Torah*

TEMPLE BETH EL ISRAEL

551 SW Bethany Drive
Port St Lucie, FL 34986
772-336-2424

PASSOVER SEDER

Wednesday, APRIL 5th at 6:00 PM



**Join us for a festive Seder at TBEI
with all the ritual Seder food
Led by Rabbi Bruce Benson**



Adult members	\$36.00	\$_____	chicken____	beef____
Adult non-members	\$46.00	\$_____	chicken____	beef____
Children of members (6 - 16)	\$16.00	\$_____	chicken____	beef____
Children of non-members	\$18.00	\$_____	chicken____	beef____
Children 5 years and under	free	\$_____	chicken____	beef____
Total enclosed		\$_____		

Name _____

Phone # _____

*Deadline for ticket sales is Friday, March 31st
Make check payable to: TBEI - Passover Seder
Reservations are required to attend the Seder*

ST LUCIE EYE

Your Eyes are at Home Here

Sapir Karli, MD

Board Certified Ophthalmology

Cataract Surgery

Comprehensive Eye Care

Glaucoma Management



772.461.2020 | stlucieeye.com



We are having another Food Drive.

When you come to our Holocaust Torah event, please bring a non-perishable food item for our food drive.



IDA RUBIN BOOK OF LIFE

CONDOLENCES TO VIC & META THOMAS ON THE LOSS OF HIS SISTER SHEILA MARKS:

Linda & Bernie Chazin
Cecile & Sam Levy
Maryann Polk
Karol & Richard Levine

CONDOLENCES TO PHYLLIS LEVY & FAMILY:

Linda & Bernie Chazin

SPEEDY RECOVERY TO RICKIE LEITER:

Doris Haendel
Karol & Richard Levine

SPEEDY RECOVERY TO JUDY ORANGE:

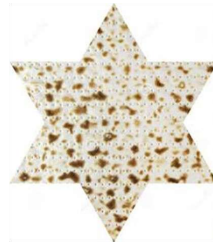
Doris Haendel



**PLEASE CALL KAROL LEVINE
TO SEND IDA RUBIN CARDS
240-285-3039**

Wishing all a Happy Passover from your Sisterhood friends at TBEI

Ferne & Bill Barishman
Lydia Bauman
Debbie Brateman
Miriam & Arno Cassel
Linda & Bernie Chazin
Cynthia & Martin Cohen
Fran Cooper & Harvey Levy
Eve & Len Epstein
Diane & Ben Goldberg
Linda Greshes
Doris Haendel
Pam & Richard Holmes
Kathy & Ray Isenburg
Carol & Marty Kahn
Eileen Katzman
Sue Klatch
Faith Krumenacker
Karol & Richard Levine
Sandra & Bruce Lippman
Cecile & Sam Levy



Karol & Richard Levine
Sandra & Bruce Lippman
Cecile & Sam Levy
Judy & Marvin Mendelson
Judy Orange
Maryann Polk
Hannah Pollack
Evelyn Poulter
Rene & Harvey Safeer
Naomi Sapphire
Susan & David Schlein
Sue Schwartz
Belle Sidel
Ruth Siegel
Ilene & Peter Sobel
Fran Tama
Meta & Vic Thomas
Ray & Michael Vesey

**It's not too late to join us for our
Temple Passover Seder
Wednesday, April 5th at 6 p.m.**

Tickets must be purchased by April 1st.



Our Monthly TBEI Library Book Review.....by Sheilah Korinow

This month, we await the arrival of Passover. It brings with it the story of our leaving the land of Egypt and includes culinary delights to remind us of what happened to our People. Who is not happy to see a seder table set for Passover with beautiful dishes, meaningful symbols, and of course, special foods we eat? With that in mind, I will offer you a couple of recipes for Passover from a cookbook I reviewed last year - L'Dor V'Dor, from Temple Beth Tikvah of Connecticut. I thought you might enjoy viewing a few Passover recipes you might not have seen before.

Glazed Chicken Wings on A Matzah Bed

5 Matzah

3 eggs

salt and pepper

About 20 chicken wings

Glaze

1 tsp. garlic powder

4 T. oil

1/3 cup water

1 tsp. paprika

4 T. honey

1 T. maple syrup

Break the matzah and cover with warm water; let stand for 5 minutes and squeeze dry. Mix the matzah with the eggs, salt and pepper. Grease a heat-proof dish and line with the matzah mixture. Cut each wing apart at the joints: discard wing tips or save to use in soup. Mix all of the glaze ingredients; Arrange the wings on the matzah bed and brush them with the glaze. Roast for an hour in a medium- high oven. Baste frequently and turn the wings once after 30 minutes.

Last year, I shared with you a recipe for Israeli Charoset. Here is one for Greek Charoset.

20 large dates, chopped

3/4 C. walnuts, ground

1 C. raisins, chopped

1/2 cup almonds, chopped

Trace of grated lemon peel

Red wine

Combine the fruit and nuts. Add the wine to bring it to the desired consistency.

There you have it. Two new recipes to try. They both seem to be fairly easy to make. By the way, if you do include them during Passover, let me know what you thought. That way, I can pass on your comments to others. One more note. With honey included in the recipes, you can also use them for Rosh Hashanah. Two birds with one stone, as they say!

VOTER ALERT

Florida canceled all standing requests for mail-in ballots effective January 1, 2023. Florida law SB-90, passed in 2021, imposed new rules on mail-in voting, effectively wiping out all existing applications for absentee ballots.

If you are a Florida resident who wishes to vote by mail in upcoming elections, you must now re-apply to receive a mail-in ballot, you will not automatically receive one. And you will have to re-new your request with every new election cycle.

Online Voter Registration (OVR) is now available in Florida.

You can register to request an absentee ballot or update your voter registration information online from any computer or handheld device by logging on to:

www.slelections.com and follow the prompts.

Remember the MST 860 lesson:

Indifference to government actions is the same as approval.

(Thank you to Harvey Safeer for sharing this information with us)

Temple Beth El Israel
551 SW Bethany Drive
Port St Lucie, FL 34986
772-336-2424



Join us on Saturday, May 20th at 7 p.m.

\$15 per person

PRIZES !!!

Put your group together
(up to 10 per table)



FUN !





Beth El Memorial Park, Inc.

Located on Old Dixie Highway in Fort Pierce one mile north of Indrio Road.
There are three pricing levels for gravesites, all of which include Perpetual Care.

TRADITIONAL PLOTS ARE 5' X 10'

CREMAINS PLOTS ARE 3' X 3'

	TRADITIONAL	CREMAINS
A - Husband, wife, dependent children under 22 who are members of Temple Beth El Israel.	\$1850.	\$1000.
B - Members of other Temples in the area.	\$1850.	\$1000.
C - For non-members.	\$2450.	\$1200.

Add \$50. filing fee per sale not per grave site & \$195. for Perpetual Care

Note: For the purpose of this pricing, a member is one who has been a paid up member of their Temple for a period of more than one year.

Opening and closing of 5 x 10 grave is \$1200 with a tent & chairs, opening and closing of 3 x 3 grave is \$450 without tent & chairs or \$750 with tent & chairs.

Add additional charge for Sunday & Holiday burials of \$300 for 5 x 10 and \$250 for 3 x 3. No burials on Shabbat or Jewish Holidays.

For more information please call: Bob Polakow (772) 807-3355 or Harold Schwartz (561) 635-5237

THE DIRECT LINE FOR THE CEMETERY IS: 772-882-3601

FOR ONLINE INFORMATION: BEMPTC.ORG

If you take pictures at any of our functions, please send them to me so we can all share your photos.
Send them to: faithkrumenacker@comcast.net



Serving the Treasure Coast Since 1983

24 HR EMERGENCY SERVICE

PROFESSIONALLY TRAINED TECHNICIANS

772-221-1660

ONE CALL

**For All Your Electric and
Air Conditioning Needs**

MAINTENANCE AGREEMENTS • REPAIRS • UPGRADES
NEW EQUIPMENT • INTERIOR LIGHTING • REMODELS
ADDITIONS • GENERATORS • SITE LIGHTING
LANDSCAPE LIGHTING • SMOKE ALARMS
COMMERCIAL • RESIDENTIAL

LIC. #EC13007849

LIC. #CAC1816767

Yates Funeral Home & Cremation Services

Family Owned and Operated
Serving the Jewish community of the Treasure Coast
For over 75 years

Now with three convenient locations to better serve you

Port St. Lucie
7951 S. US1

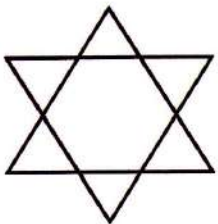
Port St. Lucie
526 SW Port St. Lucie Blvd.
(Just west of the Turnpike)

Fort Pierce
1101 S. US 1

Fort Pierce (772) 461-7000

Port St. Lucie (772) 878-2300

www.YatesFuneralHome.com





APRIL YAHRZEITS

4/1 - 4/7

May Corn Berg
Aaron Berman
Selma Fogelman
Fred Friedman
Max Gabel
Lisa Goldstein
David Granat
Mollie Greenberg
Jacob Heller
Marion Hoffman
Helen Isaac
Sidney King
Isadore Kirsch
Fay Klatch
Bertha Klein
Seymour Klepner
Marion Kovach
Alfred Levin
Max Lewis
Gene Mandel
Ruth Margoshes
Martin Marks
Roslyn Oxman
Sidney Putchat
Harry Rothberg
Bertha Schwartz
Edward B. Seskin
Morris Silverberg
Jacob Joseph Singer
Rae Sosnick
May Goldie Stillman
Florence Tenzer
Rebecca Zeichner
Harry Zolno

4/8 - 4/14

Mildred Baliff
Louis Blumer
Joseph Derman
Abraham Dorfman
Lawrence Epstein
Kalman Feldman
Rebecca Friedman
Lillian Geltman
Bernard Goldstein
Sidney Gubin
Rebecca Herman
Loretta Kahan
Judge Abram Kanner
Sam Karlin
Allen Kellner
Harry Lebowitz
Claire Levin
Edmund Lynn
Abraham Seitel
Fritzi Tama
Gerald Tartak
John Weiss
Dora Wolkowsky
Sol Wortman

4/15 - 4/21

Evan Baslow
Ann Beckenstein
Sophie Belzer
Blossom Bornstein
Louis Cooper
Esther Donow
Edith Ehrenstein
Harold Estersohn
Dr. Benjamin Friedman
Anita Gabel
Yetta Goldschmidt
Sylvia Jackins
Mayme Wild Jacobson
Sidney Kahan
Celia Kauffman
Robert Klatch
Israel Klinger
Roy Lehrer
Aneuta Lipsitt
Harry Lotsof
Mathias Mandery
Dorothy Marks
Robert Najar
Isidor Panfel
Melvin Potash
David Putchat
Stanley Rich
Alvin Sanderson
Howard Sapiro
Jacob Schumer
Louis Schwartz
Rose Seigel
Bess Selkin
Irwin Shapiro
Frank Siegel
Elaine Suckman
David Weinstein
Irving Weiss
Meyer Wheeler
Louis Wild
Blanche Williams

4/22 - 4/28

Theodore Bernstein
Frances Bromberg
John Brooking
Rita Cassel
Gerald Cohen
Charles Cooper
Jack Derector
Harry Fruman
Col. David Gale
Ida Goldman
Lena Gorowitz
Regina Greenwald
Abe Harris
Abraham Huhem
Virginia Johnston
Sidney Kampf
Jeffrey Katcher
Etta Keiserman
Shirley Lang
Bernice Leinkram
Max Mildwuvf
Lora Passin
Marie Robinson
Sonia Schaffer
Jacob Max Schnier
Minnie Schwartz
Stanley Schwartz
Paulette Segal
Lena Seitel
Frances N. Singer
Edward Stack
Jack Tarloff

4/29 - 5/5

Max Auerbach
William Barland
Michael Baslow
Rebecca Block
Gertrude Cohen
Solomon Cohen
Helen Greenwald Fitzhenry
Sol Frankel
Leila Fryser
Wilbur J. Grazi
Barbara Greenberg
Bertha Harris
Marc Kantor
Ruth Kimmel
William Klein
Daniel Kornblum
Rena Levine
Mollie Lynn
Morris Merlin
Lillian Michaels
Adele Najar
Lewis Polk
Ethel Rolnick
Joseph Rutman
Ida Sachs
Joseph Schatten
Esther Schneider
Bertha Schnier
Jack Segal
Sheila Stockel
Sarah Suckman
Edward Tannenbaum
Pearl Tannenbaum
Babe Leah Thau
Abraham Weismann
Alex Weiss
Sylvia Whitman
Henrietta Wild

Yahrzeit

Observance is an annual reminder of the date of death of a loved one and a tribute to the influence they made on our lives.

Life Cycle Events

Our sympathy and condolences are extended to:

Vic & Meta Thomas on the recent passing of his sister, Sheila Marks

May the source of peace send peace to all who mourn and comfort to all who are bereaved



Join us on June 11th at 6 p.m.
Spaghetti Dinner/Bingo game
\$18 per person



MARTIN FUNERAL HOME

*Family owned and operated serving the families of Port St. Lucie,
Fort Pierce, Jensen Beach, Palm City, Stuart and Hobe Sound
Burials, Ship-outs & Cremation Services*



Susan King, L.F.D.
Owner and Funeral Director

*We are attentive to the needs of the bereaved
and to the strong traditions
of the Jewish People.*



**Martin
Funeral Home
& Crematory**

Port St. Lucie Chapel
714 SE St. Lucie Blvd.
Port St. Lucie, FL 34984
(772) 873-3733

Fax (772) 873-1429
Located on the SE Corner of
Port St. Lucie Blvd. and Floresta Blvd.

Stuart Chapel
961 S Kanner Hwy
Stuart, FL 34994
(772) 223-5550
Fax (772) 223-5101

Located on the SE Corner of
Kanner Highway and US Highway 1



TREASURE COAST DERMATOLOGY
Specializing in the Treatment of Skin Cancer

TRUST US WITH THE HEALTH OF YOUR **SKIN**



TIM IOANNIDES, MD

- Board Certified by the American Board of Dermatology
- Voluntary Associate Professor, University of Miami School of Medicine
- Fellow, American Academy of Dermatology
- Fellow, American Society for Mohs Surgery

www.TCDermatology.com



Stuart Fort Pierce
772.221.3330 772.464.6464

St. Lucie West Vero Beach
772.878.3376 772.226.7218

Sebastian
772.388.1740



If you order from Amazon:

Temple Beth El Israel is enrolled in the **Amazon.com smile program**. Thru this program Temple Beth El Israel will receive a rebate of 1/2% of all money spent on Amazon.com. The only thing a member (or anyone else) needs to do is to log on to **smile.amazon.com** and then search for Temple Beth El Israel. The web site will take it from there. There is no additional cost to the purchaser. Thanks for your support.



Catering for all occasions!

Bar & Bat Mitzvahs • Bris & Baby Namings
Shiva Platters • Traditional Holiday Dinners

Serving Breakfast, Lunch & Dinner.



toojays.com |    

Regency Square | 2504 S.E. Federal Highway | Stuart | 772-287-6514



For us, there is no greater responsibility than helping to honor and preserve a life's story. We believe every life should be commemorated.

- Adhering to Jewish Traditions.
- Part of the Nation's Largest Network of Jewish Funeral Homes.
- Traditional Burials, Transfer from State and Cremations.



AYCOCK

FUNERAL HOMES

Aycock Funeral Home
Floresta Drive
1504 SE Floresta Drive
772.878.0049

Aycock At Tradition
Life Celebration Center
12571 SW Tradition Parkway
772-618-2336



TEMPLE BETH EL ISRAEL DONATION OPPORTUNITIES

Donor's Name _____

Address _____

City _____ State _____ Zip _____ Phone _____

Payable to TBEI:

\$ _____ Building Reserve Fund (to help cover expenses for repairs to equipment)

\$ _____ Capital Improvement Fund (for major improvements)

\$ _____ Flower Fund (for flowers on the Bima for Shabbat & Holidays)

\$ _____ General Fund (for general operations)

\$ _____ Hevra Fund (provides meals of consolation for families in mourning)

\$ _____ Kiddush Fund (provides refreshments after Shabbat morning services)

\$ _____ Leaf on the Tree of Life:

Bronze \$100 Silver \$150 Gold \$200

In remembrance of a special person or event

Forms are available in the Temple office

\$ _____ Library Fund (for the purchase and upkeep of library books and equipment)

\$ _____ Memorial Plaques - \$200 - in memory of a loved one

Forms are available in the Temple office

\$ _____ Religious School Scholarship Fund

(provides need-based scholarships for students attending our religious school)

\$ _____ Yahrzeit Fund (commemorates the anniversary of the death of a loved one)

\$ _____ Music Fund (to provide musical accompaniment on Holidays and events)

\$ _____ Security Fund (to offset the cost of the Security Guard at TBEI)

\$ _____ Special ***Holocaust Torah MST 860 Fund***

Payable to Rabbi's Discretionary Fund:

\$ _____ For the use of the Rabbi for educational/charitable projects

Payable to TBEI Sisterhood:

\$ _____ Ida Rubin Book of Life (to send cards for any occasion (birthday, get well, etc)

\$ _____ Oneg Shabbat Fund (provides refreshments after Friday night Services.

PLEASE INDICATE THE NAME OF THE FUND RECEIVING YOUR DONATION ON THE MEMO LINE OF YOUR CHECK

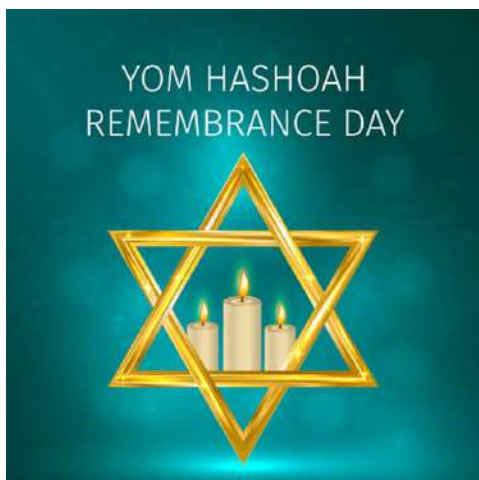


TEMPLE BETH EL ISRAEL
551 SW Bethany Drive
Port St. Lucie, FL 34986
<http://www.templebethelisrael.org>



Happy Passover

OR CURRENT RESIDENT



Friday night April 14th

Judaica Shop

Fridays 7 - 7:30 p.m.
or call for an appointment

Linda Chazin 871-1205
Faith Krumenacker 343-7639