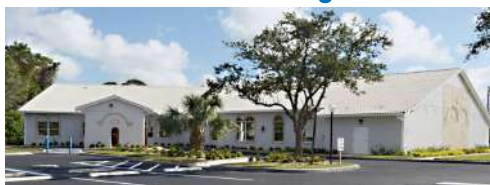


The Shofar



Temple Beth El Israel

551 SW Bethany Drive
Port St Lucie, FL 34986
phone 772-336-2424

February 2023

SHEVAT / ADAR 2023 / 5783

Upcoming events:

Sisterhood Card Party/Luncheon

~

***Brotherhood Show starring
Jeff Leiter & Ed Humphries***

~

Neil Zirconia - Sisterhood Show

*See the flyers in this issue for more information
about what's happening at TBEI.*

**Please note all events are subject to cancellation
due to circumstances beyond our control**

Rabbi

Bruce Benson

President

Michael Zeff

Vice President

Faith Krumenacker

Co-Treasurers

Sue Klatch

Tobi Rettig

Recording Secretary

Arlene Schweitzer

Sisterhood Co-Presidents

Evelyn Poulter &

Eve Epstein

Brotherhood President

Jeff Kreiss

Board of Directors:

Lydia Bauman

Gary Cooper

Rickie Leiter

Sue Schwartz

Past President:

Lillian Beauchamp

From the Desk of Rabbi Bruce Benson

The book of Exodus defines the relationship between man and God. Our responsibilities have been strongly redefined as have those of God. We have gone from the followers of God who creates and then assigns us fulfillment opportunities, (read through the jobs assigned to humanity throughout Genesis.



Basically, God says, "I have done this.... I have set these things in motion, it is your job to produce results.

Exodus is quite a different situation. For example, God suggests several times to Moses and Aaron, "I will lead you out of Egypt" "Go tell Pharaoh that your God said this The job was for Moses to lead and God will be there as the "proof text". God acts as the prover of the strength of the Israelite God YAHWEH, about to be known as Adonai, a much more relational God.

The ask and response paradigm have altered substantially. You tell them (the Egyptians) how powerful your God is and I will swoop down and prove it. We are often proving ourselves to others on behalf of God and occasionally reaping the benefits.

The story is told of the man who offers the following prayer to God:

Dear Lord,

So far today God, I've done all right. I haven't gossiped, lost my temper, been nasty, greedy, grumpy, overindulgent, overbearing, selfish or obnoxious. I'm really glad I've accomplished all of these things on my own. But, in a few minutes Lord, I'm going to get out of bed and from that point on, I'm going to need all the help I can get from you.

God IS there as our partner and we are the other half. But it is a 50/50 relationship. Let us ask for our fair share, but not more than. It should be the same when we look at who we have chosen to become, not just for the what we ask for. Let's even the playing field. That seems fair enough. We all need whatever help we can get.

Rabbi Bruce

Join us for
Shabbat.



The President's Message.....

Greetings TBEI members,

We have several exciting events coming up this month, including a musical performance that Brotherhood has organized and a Luncheon Mah Jongg/Card Party from Sisterhood. You won't want to miss these great events.

I also strongly encourage you to get involved in our congregation and join our board. Giving your time and talents to our congregation is extremely rewarding.

If you're interested in being on our Board of Directors, please fill out an application and submit it to the Temple before February 10th. Applications are available in the Temple, or you can call and ask to have one mailed to you.

All the best,

*Michael Zeff
TBEI President*

Rabbi Benson's Cell Phone Number is: 561-601-8294

Our officer's phone numbers:

Michael Zeff ~ President	561-672-9929
Faith Krumenacker ~ Vice President	772-343-7639
Tobi Rettig/Sue Klatch ~ Co-Treasurers	772-971-5649/772-336-7175
Arlene Schweitzer ~ Recording Secretary	305-804-8979
Eve Epstein & Evelyn Poulter ~ Sisterhood Co-Presidents	807-4713/812-1124
Jeff Kreiss ~ Brotherhood President	772-336-0427

You're Invited!!!!

**Join Rabbi Benson
on Thursday mornings at 10 AM
for our Torah Study Class on ZOOM**

<https://us02web.zoom.us/j/84122238910>

SISTERHOOD NEWS

Dear Sisterhood ladies,

We hope you'll join us this month for our semi-annual Card Party/Luncheon on February 14th at 11:30 a.m. Please remember to tell your friends about this fun event and support our fund-raising efforts. The cost is \$22.

To sponsor an oneg for any occasion, you can contact our presidents.

On March 3rd we will be celebrating "Shabbat Across America" with a pot-luck dinner. You can call the Temple office to let us know what you will be bringing.

Our guest speaker at our March meeting will be Talia Carner author of the book "The Third Daughter". See the flyer in this issue for more information.

Sincerely,
Eve and Evelyn



OUR SIMCHA CAKE

CELEBRATE YOUR HAPPY OCCASIONS IN THE SHOFAR EACH MONTH.

SIMCHAS, GOOD WISHES & GREETINGS TO SHARE:

WE APPRECIATE EVERYONE THAT
VOLUNTEERS AND HELPS AT TBEL.

THANK YOU TO
EVERYONE THAT SUPPORTS
OUR FUNCTIONS & EVENTS.

HAPPY BIRTHDAY
TO MY SWEETHEART RAY
LOVE, RONNI

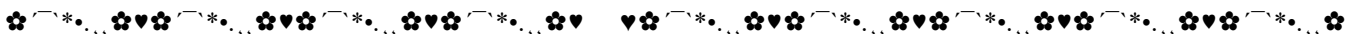


HAPPY BIRTHDAY
JACKIE WARD
FROM MOM & LILLY

THANK YOU TO
EVERYONE FOR YOUR PRAYERS
AND GOOD WISHES
LOVE, RONNI



Come to our Tu B'Shevat Seder on Saturday, February 4th, following the service, to observe "The New Year of Trees". We will be celebrating with all the customary fruits and nuts related to the Holiday and indigenous to Israel.



BROTHERHOOD NEWS:

Dear Members,

The TBEI Brotherhood reminds everyone of the upcoming "Musical Evening" on Saturday, February 18th at 7 p.m., starring Jeff Leiter and Ed Humphries. Tickets are \$18 each and can be purchased at the Temple office during normal business hours. Tickets are available online as well – see the flyer in the current issue of the Shofar and on our website. Coffee and cake will be served after the concert.

Also in the planning stage is our Yom HaShoah candle distribution in April. More to follow in the weeks to come.

We invite all our Temple members to join us at our services, events and functions.

Jeff Kreiss, President



*Don't miss our next show
starring
Jeff Leiter & Ed Humphries
Saturday night,
February 18th at 7 p.m.*

*Tickets are \$18
and are available
in the Temple office and online.*

See the flyer in this issue for details.

Life Cycle Events ~ Get Well Wishes and speedy recovery to:

Amy Conoly
Carol Seigel

Linda Greshes
Mark Stuart

Carol Kahn
Michael Zelinsky

DISCRIMINATION AND ANTISEMITISM

Discrimination is the unfair or prejudicial treatment of people and groups based on characteristics such as: Disability, Sexual Orientation, Status as a Parent, National Origin, Religion, Pregnancy, Race, Color and Sex.

Discrimination cannot be attributable to any one or group of individuals. Even within a discriminated group there can be discrimination. Religion based discrimination is not limited to any one particular religion. Wars have been fought all over the world in the name of a Religion. However, only one variant of religious discrimination has persevered for centuries and in almost all countries. In fact, this form of discrimination is so ubiquitous it has a name: **antisemitism. The Holocaust Encyclopedia defines antisemitism as “prejudice against or hatred of the Jews.”**

According to the Anti-Defamation League, 2021 was the highest year on record for documented reports of harassment, vandalism and violence against Jews.

Contemporary examples of antisemitism in public life, the media, schools, the workplace, and in the religious sphere, includes, but is not limited to: “Calling for, aiding, or justifying the killing or harming of Jews in the name of a radical ideology or an extremist view of religion”.

Making mendacious, dehumanizing, demonizing, or stereotypical allegations about Jews as such or the power of Jews as a collective - such as, especially but not exclusively, the myth about a world Jewish conspiracy or of Jews controlling the media, economy, government or other societal institutions.

Accusing Jews as a people of being responsible for real or imagined wrongdoing committed by a single Jewish person or group, or even for acts committed by non-Jews.

Denying the fact, scope, mechanisms (e.g. gas chambers) or intentionality of the genocide of the Jewish people at the hands of National Socialist Germany and its supporters and accomplices during World War II (the Holocaust).

Accusing the Jews as a people, or Israel as a state, of inventing or exaggerating the Holocaust. Accusing Jewish citizens of being more loyal to Israel, or to the alleged priorities of Jews worldwide, than to the interests of their own nations.

A recent study by the Center for Antisemitism Research concluded that “antisemitic attitudes in the United States are widespread and likely increasing; 85 percent of Americans believe at least one anti-Jewish trope as opposed to 61 percent in 2019. Furthermore, 20 percent of Americans believe six or more anti-Jewish tropes, substantially more than the 11 percent found in 2019. Unlike in years past, researchers found that young people seem to hold similar levels of belief in anti-Jewish tropes compared to older adults.”

From the very beginning of their regime the Nazis discriminated against the Jews. Initially they passed laws limiting the social, political, economic and religious activities of the Jews.

Over time the measures against the Jews became more draconian until eventually the policy became the complete annihilation of the Jews --- **the Holocaust.**

Thank you to Harvey Safer for bringing all this very important information to our attention.

THE HOLOCAUST

The Holocaust was the systematic, government sponsored persecution and murder of 6 million European Jews by the Nazi German regime and its allies and collaborators.

During the 1920s and 1930s Europe saw the outbreak of an aggressive and antisemitic nationalism that made racial and social claims and which saw the Jews as an inferior and dangerous race. It sought to limit Jewish economic activity and distanced Jews from public life in their countries. With Adolf Hitler's rise to power in Germany this racial Antisemitism became the official ideology and policy of the German regime. In 1938 an organized campaign took place that included destroying synagogues, mass arrests, destruction and looting of Jewish owned businesses, and official registration of Jewish property in preparation for eventual confiscation.

THE HOLOCAUST IN BOHEMIA AND MORAVIA

By the time of the Nazi invasion in March 1939, the Jewish community had been in Bohemia and Moravia for more than a thousand years. The Nazis immediately took over Jewish businesses and property, forcing the congregations to close, using the Jewish community administration to enforce their demands and decrees. In November 1941, RSHA chief Reinhard Heydrich ordered the creation of a camp-ghetto at Theresienstadt, 37.5 miles north of Prague. Between 1941 and late 1944, the Czech Jews were deported from Bauschowitz to Theresienstadt ghetto. German authorities, assisted by local Czech gendarmerie, deported 73,603 Jews from Prague, Brno, Ostrava, Olomouc, and other towns of the Protectorate to Theresienstadt. Most stayed only briefly in Theresienstadt, which served as a transit camp for Protectorate Jews.

In 1942, as a result of instructions sent by Dr. Stein of the Jewish Religious Community (Jüdische Kultusgemeinde) in Prague, the communities of Bohemia and Moravia packed their Sifrei Torah and other religious artifacts and sent them to the Jewish Museum in Prague. The Germans had all of this catalogued by the Jewish curators of Prague who were deported to concentration Camps once the work was finished. Although revived after the war, the Communists in 1948 suppressed the Jewish communities. The scrolls were then transferred and warehoused in the ruined synagogue at Michle, outside Prague, where they remained until 1964.

In February 1964, after some negotiations with the Communist Czech government, 1564 scrolls arrived in London. Most of the scrolls that arrived in London from the damp Michele Synagogue could be matched with the individual records of congregations from which they had come. There were those which had been given a number, but where there was no record to show where they had come from. **These now became the "Orphan Scrolls"**

MST860 IS AN ORPHAN SCROLL

SOURCES:

Czech Torah Network: www.czechtorah.org

U.S. Holocaust Museum <https://encyclopedia.ushmm.org/>

Memorial Scrolls Trust: <https://memorialscrollstrust.org/>

Yad Vashem: <https://www.yadvashem.org/>

ADL: <https://www.adl.org/>

Our Judaica Shop

**We have many new and beautiful items on sale.
If you would like to purchase something in the gift shop,
we are open on Fridays from 7 to 7:30 p.m.
or call for an appointment.**



**We have mini-Jewish calendars
for \$4 each while supply lasts.**

Linda 871-1205 Faith 343-7639



~ ~ ~ SAVE THE DATE ~ ~ ~

Be a part of our exciting celebration

On April 15th come walk with us as we welcome our Holocaust Torah to TBEI



FORWARD
Electric & Air Conditioning
"Friendly, Willing, Dependable...Moving You Forward!"

Serving the Treasure Coast Since 1983

24 Hr EMERGENCY SERVICE
PROFESSIONALLY TRAINED TECHNICIANS

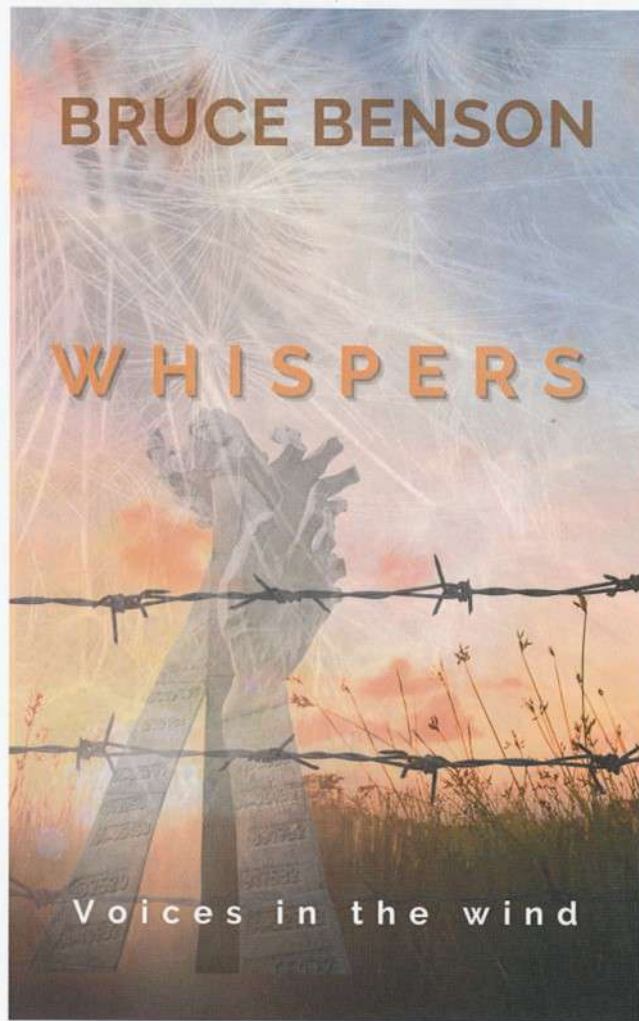
772-221-1660

**ONE CALL
For All Your Electric and
Air Conditioning Needs**

**MAINTENANCE AGREEMENTS • REPAIRS • UPGRADES
NEW EQUIPMENT • INTERIOR LIGHTING • REMODELS
ADDITIONS • GENERATORS • SITE LIGHTING
LANDSCAPE LIGHTING • SMOKE ALARMS
COMMERCIAL • RESIDENTIAL**

LIC. #EC13007849

LIC. #CAC1816767



Born in 1950's America, for me and my generation, the Holocaust has been a continual drumbeat in the lives of Jews around the world. The distance allowed the raw truth to evade many of us. I felt a compelling need to see, hear, taste, feel and walk where it all took place. Over a 12-day trip, all that and more was experienced. The search for the voices of the six million murdered was afoot. This is the story of the search for Voices in the Wind.

Rabbi Benson's long-awaited book will finally be published in April.

The book is a memoir of the trip that we took to Europe several years ago and the observations and feelings that the trip left us with after seeing the sites we witnessed first-hand.



Restorative Chair Yoga

Yoga instructor and member of our Temple, Shelli August, is offering us a great opportunity.

The benefits of Chair Yoga are:

The upper body and legs will gain strength and flexibility. The circulatory system will be stimulated. Balance and posture will improve. The more you practice the better and healthier you'll feel. The classes begin on Tuesday, March 7th at 1 p.m. starting with a 6-week session. The cost is \$25 for 6 classes for Temple members.

We should wear comfortable nonrestrictive clothing, bring water and a small hand towel.

At the end of class there will be a 5 minute guided meditation/ relaxation... even in a chair. After each session, we can stay to ask questions and socialize.

Yoga makes you stronger, more flexible, improves balance, concentration and brings inner peace. Come with an open mind and heart.

February Birthdays

- 1 Deborah Brateman
- 2 Shelli August
- 2 Charles Brofman
- 11 Michael Vesey
- 12 Zachary Birch Farragut
- 12 Justin Glickman
- 12 Joseph Greenwald
- 13 Kai Fromer
- 13 Jacqueline Ward
- 14 Traci Glickman
- 18 Jason Grant
- 22 Sara Maggin
- 23 Liana Rosichan-Nader
- 24 Albert Bindman
- 24 Sherry Frank
- 27 Lester Schwartz
- 27 Francine Tama



CONGRATULATIONS

חג שמח

February Anniversaries



- 8 Karol & Richard Levine
- 14 Drs. Douglas & Judith Logue

מזל טוב

If you don't see your birthday or anniversary listed in the Shofar, contact the Temple office and ask to have your special day included on our list.



Rob Sharot, Owner
 1374 SE Huffman Road Port St. Lucie, FL 34952
 270 NW Peacock Blvd., Ste. 107 Port St. Lucie, FL 34986
 info@carpetsetcpsl.com www.carpetsetcpsl.com
 772-878-4707 • FAX: 772-878-4767

REMINDER

**MASKS ARE OPTIONAL
 IN THE TEMPLE
 UNTIL FURTHER NOTICE.**



SAVE THE DATES!!!

February 14th – Sisterhood's Winter Mah Jongg/Card Party/Luncheon

February 18th – Brotherhood's Show starring Jeff Leiter & Ed Humphreys
 Tickets available in the Temple office or to buy tickets online go to:

<https://www.eventbrite.com/e/a-musical-evening-staring-jeff-leiter-and-ed-humphries-tickets-486893861647>

March 18th – Sisterhood's Show starring Neil Zirconia

Tickets are available for all our events in the Temple office.

THE STAMP CORNER ~ ~

CELEBRATING TU B'SHEVAT, JEWISH ARBOR DAY, IN FEBRUARY

by Ellis Bromberg

Rosh Hashanah is not the only Jewish New Year Day; the Mishnah Rosh Hashanah 1:1 declares that one of the other dates that mark a "new year" is the 15th of Shevat -- the New Year for Trees. The festival, considered a minor Jewish holiday, is called Tu B'Shevat, and will begin this year on the evening of Sunday, February 5, and end on the evening of February 6.

A colorful three-stamp set, issued by Israel in 1975, celebrates Tu B'Shevat, commonly referred to today as Israel's Arbor Day.

The holiday falls during Israel's first days of spring, usually coinciding with the heavy rains of February, when freshly planted saplings have the best chance of survival.

Although not mentioned in the Bible, Tu B'Shevat originated in the early days of ancient Israel when its residents were largely farmers and herders. Tithes of products and livestock formed an essential part of taxation, and the Mishna details the choice of the 15th of Shevat as the date for the beginning of the cycle for agricultural tithes.

The celebration of the holiday has evolved over the years. It did not become an accepted festival until the 16th century when Rabbi Isaac Luria of Safed and his disciples developed a ceremony in which families and friends sat at a table laden with dozens of products of the Holy Land; wine was drunk, and appropriate prayers and poems were recited. The practice spread throughout the Jewish Diaspora.

In 1908, the Jewish Teachers Association of Palestine initiated a new practice intended to restore fertility to Israel: they led a mass planting of saplings at Mikveh Israel, a youth village and boarding school, in Tel Aviv. Founded in 1870, Mikveh Israel was the first Jewish agricultural school in what is now Israel, and the first modern Jewish settlement in Palestine outside Jerusalem. The Jewish National Fund (JNF), founded in 1905 to buy and develop land in Palestine, took up the idea, and ambitious projects of swamp reclamation and afforestation soon followed. The JNF and Teachers Association also encouraged schoolchildren to march out on Tu B'Shevat with seedlings and spades to increase the greenness of Israel -- a practice that continues today.

Since the creation of the State of Israel in 1948, miraculous changes have taken place in the country's often barren, moisture-lacking terrain. The JNF, with governmental aid, has drained marshes, planned vast irrigation projects, cleared and sowed arable land, and planted hundreds of thousands of trees. National bodies, including the National Parks Authority, have saved wide areas, turning them into well cared-for parks, nature reserves, and places for recreation.

The three stamps in the series depict the festival as an ecological awareness day. The biblical quotations on the tabs (the attached labels below the stamps), in Hebrew and English, are all from the Song of Solomon (also known as the Song of Songs):

The 1 agorot stamp features a young girl holding leaves and looking at a rainbow in the sky. The tab bears the phrase: ". . . the winter is past; the rain is over and gone" (Song of Solomon 2:11).

The 35 agorot stamp shows a bird singing in a tree. The tab is inscribed: "The flowers appear on the earth, the time of singing has come..." (Song of Solomon 2:12).

The 2-pound stamp depicts a young boy holding a potted plant while walking under a bright sun. The stamp's tab has this inscription: "Come, my beloved, let us go forth into the fields..." (Song of Solomon 7:11).

See the stamps on next page

Continued from previous page

This month's featured stamps



*Join us on March 3rd at 6 p.m.
for a Pot Luck Dinner
to celebrate Shabbat Across America*

*Please call the Temple office
to let us know
what you would like to contribute
Call 772-336-2424*

*We celebrated Ronni's recovery
and Ray's Birthday this past month.*



This past month:



*Our MST860 Holocaust Torah
Debbie read the beginning
"B'reshit" when we opened the scroll*



We will be officially welcoming our Holocaust Torah to our community on April 15th - join us for this exciting celebration.

Tu B'Shevat



Tu B'Shevat is a holiday connected to the agricultural cycle of the Land of Israel. Known as The New Year of the Trees it is often celebrated by planting saplings and by participating in a Tu B'Shevat seder that consists of the produce of trees indigenous to Israel. Tu B'Shevat is a Jewish holiday occurring on the 15th day of the Hebrew month of Shevat. This year Tu B'Shevat begins at sunset on February 5 and ends in the evening of February 6. It is also an ecological awareness day, and trees are planted in celebration.

The name *Tu B'Shevat* is originally from the Hebrew date of the holiday, which occurs on the fifteenth day of Shevat. "Tu" stands for the Hebrew letters Tet and Vav, which together have the numerical value of 9 and 6, adding up to 15.



THANK YOU FOR YOUR GENEROUS DONATIONS:

Donations to the General Fund:

Arnalda Alwood
~
Peter & Ilene Sobel
~
Leonard & Eve Epstein

Donations to the Security Guard Fund:

Deborah Brateman

NOTE:

Above donations were received in December.

YAHARZEIT FUND DONATIONS

From:

Donald Rudolf
Eileen S Katzman
Harvey Levy
Victor & Meta Thomas
William & Ferne Barishman
Karen Wolf
William Weinshank
Donald Rose
Rochelle Lustig
Claudia Rodburg
Leonard & Eve Epstein

Claudia Rodburg
Beverly Elster
Harvey & Rene Safeer
Michael & Lynne Cohn
Faith Krumenacker

In Memory Of:

Charles Rudolf
Max Rudolf
Saul Schullay
Ida Katzman
Sandra Puchaski
Betty Prepon
Milton Barishman
William Siegman
Irene Chaveu
Engene Rose
Elias Bergman
Sally Rodburg
Shirley Seltzer
Dorothy Epstein
Judi Schneider
Abraham Teich
Sandra Cohen
Stella Safeer
Bella Mandery
Jacqueline Krumenacker
Peter Krumenacker

Donations listed above were received in December.

The 2022/2023
Enjoyment Books are still
on sale in the Judaica Shop
until March 1st.

PLEASE.....

Notify the Temple office or call the Rabbi if a family member or fellow congregant is ill, has had an accident, or is in need of the Rabbi's services. The Rabbi can only help if he is informed.

TAX TIP

The Setting Every Community Up for Retirement Enhancement Act of 2019 (SECURE Act) became law on December 20, 2019. The Secure Act made major changes to the Required Minimum Distribution (RMD) rules. If you reached the age of 70½ in 2019 the prior rule applies, and you must take your first RMD by April 1, 2020. If you reach age 70 ½ in 2020 or later you must take your first RMD by April 1 of the year after you reach 72.

The amount of your RMD is a taxable distribution. You can reduce your tax liability and assist TBEI by making a Qualified charitable distribution (QCD).

A QCD is generally a nontaxable distribution made directly by the trustee of your IRA (other than a SEP or SIMPLE IRA) to an organization eligible to receive tax-deductible contributions. You must be at least age 70½ when the distribution was made. Also, you must have the same type of acknowledgment of your contribution that you would need to claim a deduction for a charitable contribution.

As an example: if you are in the 22 percent tax bracket a distribution of \$1,000 would increase your tax liability by \$220. If you made a QCD to TBEI there would be a \$220 saving to you and TBEI would get the full \$1,000.

For more information see IRS Publication 590-B (2021), Distributions from Individual Retirement Arrangements (IRAs)



Watch the mail for your *Yom HaShoah Memorial Candle* that will be mailed next month and be a part of the Brotherhood Yom HaShoah commemoration at our service on April 14th.



*If you aren't getting your emails from the Temple...
Check your spam folder and put our email information into the address book in your computer.*

Our new Shofar advertising year begins with the September issue.
If you or anyone you know would like to advertise in our monthly newsletter, please contact the Temple office for details.

Rates are as follows per year:

FULL PAGE.....\$325.00
HALF PAGE.....\$200.00
QUARTER PAGE.....\$145.00
BUSINESS CARD.....\$ 95.00
ONE-TIME FULL PAGE.....\$ 40.00 / ISSUE

Print-ready ads must be submitted no later than August 10th for the September issue. Please send your ad to:

faithkrumenacker@comcast.net



TREE OF LIFE AND MEMORIAL PLAQUES

*Bronze - \$100
Silver - \$150
Gold - \$200*

*Memorial Plaques - \$200
Call the Temple office @ 336-2424
to reserve a leaf or memorial plaque.*

Friday night Candle Lighting Schedule:



February:

3	5:47 pm
10	5:52 pm
17	5:57 pm
24	6:01 pm



Lighting the Shabbat Candles:

ברוך אתה יי אלהינו מלך העולם
אשר קדשנו במצותיו וצונו
להדליק נר של שבת: (אמן)

Baruch ata Adonay, Eloheynu melech ha-olam, asher kid-shanu b'mitz-votuv, v'tzivanu l'hadlik nayr shel Shabbat.

Praised are You, Lord our G-d, King of the universe, who has taught us the way of holiness through the Mitzvot, and enjoined upon us the kindling of the Shabbat lights.



THE KARP LAW FIRM, P.A.

Elder Law, Estate Planning, Wills & Trusts,
Asset Preservation, Trust Administration,
Medicaid & VA Benefits Planning, Probate,
Estate Litigation, Elder Law/Probate Mediation

"Your Peace of Mind is Our Priority"



Joseph S. Karp
Florida Bar Certified Elder
Law Attorney,
FL & NY Bar



Jonathan D. Karp
Florida Estate Planning
& Elder Law Attorney

New Address
1860 SW Fountainview Blvd., Suite 100
Port St. Lucie, FL 34986
Web: www.karplaw.com
(772) 343-8411 (800) 893-9911



TBEI CZECH HOLOCAUST TORAH



On April 15, 2023, a piece of history will be coming to TBEI. We will welcome a Czech Holocaust Torah to our Temple designated MST860. This is one of 1,564 scrolls that the Nazis took from the synagogues in Bohemia and Moravia in 1942. The Torah scroll is the most important document in Judaism and has been the “spiritual glue” that has held the Jewish people together through the centuries. The TBEI Holocaust Torah is on loan from the Memorial Scrolls Trust in London.

They have cared for them since 1964 and loan these scrolls throughout the world. We know that the scrolls are rare not just because many in the collection are hundreds of years old, but because they were rescued from the terror and destruction of the Holocaust. While many of the scrolls have a known provenance, no such data exist for MST860. Truly, MST860 is an “orphan.” It will become a member of our TBEI family.

The fostering of the TBEI Holocaust Torah has been made possible by the efforts of Rabbi Benson and the generous donation of \$5,000 from several Temple members. The Torah comes to us without the usual ritual accoutrements accompanying it, so we will be purchasing a Torah Mantle, Wimple and Yad since the Torah will be used periodically for services.

The Torah will be housed in a separate display case in the lobby so it can be shared with all who enter the Temple. This display case will be constructed of materials that will assure its security and preservation.

A special ***Holocaust Torah MST Fund*** at TBEI is ready to accept donations in order to give MST860 a welcome presence. Check the TBEI website, Shofar, and Connections for future updates concerning MST860 related activities. If you know someone outside the TBEI family who would be interested, please let us know by calling the office and leaving a message.

Sisterhood of Temple Beth El Israel

Presents

Winter MahJong/Card Party

Catered by *Bagel Break*



Tuesday, February 14, 2023

11:30 a.m. to 4:00 p.m.

Tickets \$22 per person

Tickets available at the Temple Office

551 SW Bethany Drive, Port St. Lucie Tel (772) 336-2424

Open 10 - 1 Monday through Friday

Ticket sale deadline is February 7, 2023.

Food Choices

Tuna Salad ____

Chicken Salad ____

Egg Salad ____

Vegetarian ____

All come with chips and dessert.

Name: _____

TEMPLE BETH EL ISRAEL BROTHERHOOD

Presents:

A MUSICAL EVENING

Starring JEFF LEITER & ED HUMPHRIES

Featuring

THE GREAT AMERICAN SONG BOOK



SATURDAY, FEBRUARY 18, 2023

7:00 p.m. to 8:30 p.m.

\$18 per person

Tickets can be purchased

Monday to Friday from 10 a.m. to 1 p.m. at

TEMPLE BETH EL ISRAEL

551 SW Bethany Drive

Port St Lucie, FL 34986

For information call 772-336-2424.

**For a preview of
their show go to
Youtube.com**

To buy tickets online go to:

<https://www.eventbrite.com/e/a-musical-evening-starring-jeff-leiter-and-ed-humphries-tickets-486893861647>

ST LUCIE EYE

Your Eyes are at Home Here

Sapir Karli, MD

Board Certified Ophthalmology
Cataract Surgery
Comprehensive Eye Care
Glaucoma Management



772.461.2020 | stlucieeye.com

Join Rabbi Benson for:

TORAH STUDY



We meet every THURSDAY beginning at 10:00 a.m.
to study and reflect on the weekly Torah portion.
Join us for this study of the Torah and its specific lessons for the week.
Here's the Zoom link:

<https://us02web.zoom.us/j/84122238910>

We look forward to having you join this lively discussion.

A Temple Beth El Israel Sisterhood & NCJW Presentation
Tuesday, March 7th at 12:30 p.m.

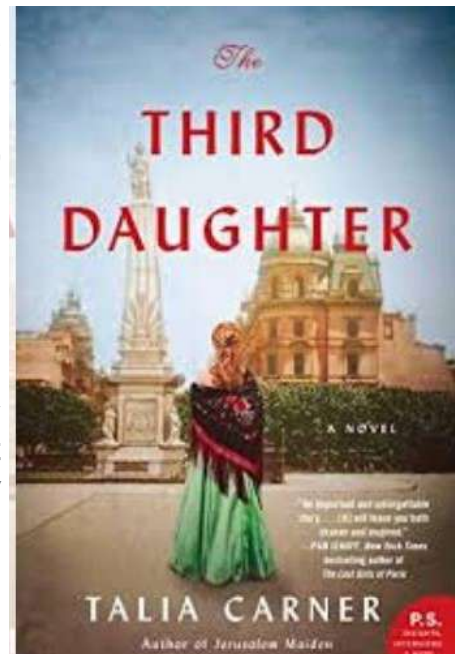


Talia Carner

Join us for a conversation with the Author of “The Third Daughter”, Talia Carner’s fifth book. Talia Carner is formerly the publisher of Savvy Woman magazine, a marketing consultant, and a lecturer at international women’s economic forums. An award-winning author of five novels and numerous stories, essays, and articles, she is also a committed supporter of global human rights.

“In *The Third Daughter*, Talia Carner ably illuminates a little-known piece of history: the sex trafficking of young women from Russia to South America in the late 19th century. Thoroughly researched and vividly rendered, this is an important and unforgettable story of exploitation and empowerment that will leave you both shaken and inspired.” — Pam Jenoff, New York Times bestselling author of *The Lost Girls of Paris*

The turn of the 20th century finds fourteen-year-old Batya in the Russian countryside, fleeing with her family from endless pogroms. Desperate, her father leaps at the opportunity to marry Batya to a worldly, wealthy stranger who can guarantee his daughter an easy life and passage to America. Feeling like a princess in a fairytale, Batya leaves her old life behind as she is whisked away to a new world. But soon she discovers that she’s entered a waking nightmare. Her new “husband” does indeed bring her to America: Buenos Aires, a vibrant, growing city in which prostitution is not only legal but deeply embedded in the culture. And now Batya is one of thousands of women tricked and sold into a brothel. As the years pass, Batya forms deep bonds with her “sisters” in the house as well as some men who are both kind and cruel. Through it all, she holds onto one dream: to bring her family to America, where they will be safe from the anti-Semitism that plagues Russia. Just as Batya is becoming a known tango dancer, she gets an unexpected but dangerous opportunity—to help bring down the criminal network that has enslaved so many young women and has been instrumental in developing Buenos Aires into a major metropolis. A powerful story of finding courage in the face of danger, and hope in the face of despair, *The Third Daughter* brings to life a dark period of Jewish history and gives a voice to victims ...



TEMPLE BETH EL ISRAEL PRESENTS:

***AN EVENING WITH
NEIL ZIRCONIA***



THE ULTIMATE FAUX DIAMOND

SATURDAY, MARCH 18th, 2023 at 7:30 p.m.

TICKETS \$25

AVAILABLE AT THE TEMPLE OFFICE

551 SW Bethany Drive

St Lucie West

For information call 772-336-2424

Office hours 10 a.m. to 1 p.m. Monday - Friday

Temple Beth El Israel Sisterhood

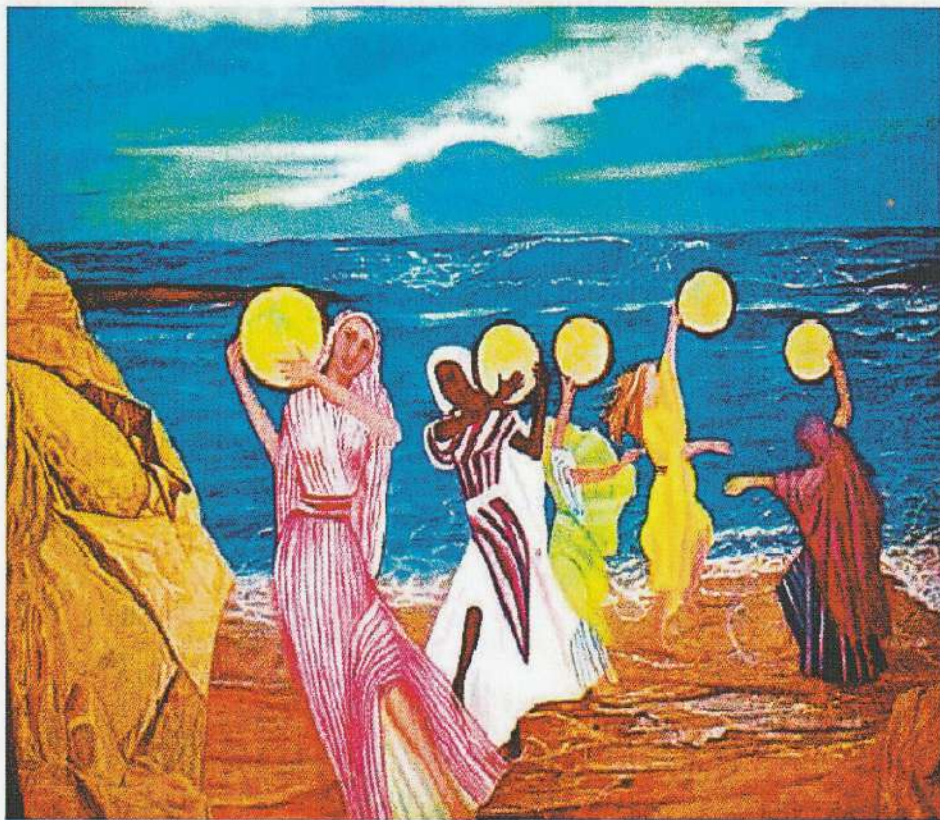
Women's Seder

Tuesday, March 28, 2023 at 11:30 AM

Tickets are \$15 and can be purchased

at the Temple office by March 24, 2023

Please bring your favorite Passover Dessert to share



*"And the women dancing with their timbrels
followed Miriam as she sang her song."*

TEMPLE BETH EL ISRAEL

551 SW Bethany Drive
Port St Lucie, FL 34986
772-336-2424

PASSOVER SEDER

Wednesday, APRIL 5th at 6:00 PM.



**Join us for a festive Seder at TBEI
with all the ritual Seder food
led by Rabbi Bruce Benson.**



Adult members	\$36.00	\$_____	chicken____	beef____
Adult non-members	\$46.00	\$_____	chicken____	beef____
Children of members (6 - 16)	\$16.00	\$_____	chicken____	beef____
Children of non-members	\$18.00	\$_____	chicken____	beef____
Children 5 years and under	free	\$_____	chicken____	beef____
Total enclosed		\$_____		

Name _____
Phone # _____

*Deadline for ticket sales is Friday, March 31st.
Make check payable to: TBEI - Passover Seder.
Reservations are required to attend the Seder.*



Beth El Memorial Park, Inc.

Located on Old Dixie Highway in Fort Pierce one mile north of Indrio Road.
There are four pricing levels for gravesites, all of which include Perpetual Care.

TRADITIONAL PLOTS ARE 5' X 10' CREMAINS PLOTS ARE 3' X 3'

	TRADITIONAL	CREMAINS
A - Husband, wife, dependent children under 22 who are members of Temple Beth El Israel.	\$1850.	\$1000.
B - Members of other Temples in the area.	\$1850.	\$1000.
D - For non-members.	\$2450.	\$1200.

Add \$50. filing fee per sale not per grave site & \$195. for Perpetual Care

Note: For the purpose of this pricing, a member is one who has been a paid up member of their Temple for a period of more than one year.

Opening and closing of 5 x 10 grave is \$1200 with a tent & chairs, opening and closing of 3 x 3 grave is \$450 without tent & chairs or \$750 with tent & chairs.

Add additional charge for Sunday & Holiday burials of \$300 for 5 x 10 and \$250 for 3 x 3. No burials on Shabbat or Jewish Holidays.

For more information please call: Bob Polakow (772) 807-3355 or Harold Schwartz (561) 635-5237

THE DIRECT LINE FOR THE CEMETERY IS: 772-882-3601
FOR ONLINE INFORMATION: BEMPTC.ORG



A Special Breakfast Meeting

On Thursday, March 16th, from 9:00 until 10:30, the Temple is sponsoring a FREE breakfast for ALL the TBEI men to give us the long overdue opportunity to socialize. No speeches, no solicitation, no business meeting, not even a 50/50. We will have a short (that's a promise) program that will be of interest to all. Please mark the date and plan on joining us.

An RSVP is essential for the food purchase.

To RSVP call the Temple office Monday - Friday 10 a.m. to 1 p.m. at 772-336-2424



Michael Cook, DMD
John Harlee, DDS



10690 So. U.S. Highway #1, Suite A
Port St. Lucie, Florida 34952
(772) 335-3300 • Fax (772) 398-9773
www.southportdental.com

Join Rabbi Benson
on Thursday mornings at 10 AM
for interesting Torah Study discussions.
We can all learn more about Judaism.
No reservations necessary!!





HAISLEY

Funeral & Cremation Service

Now with two Locations

3015 Okeechobee Road, Fort Pierce, FL 34947, 772-461-5211

2041 SW Bayshore Blvd., Port St. Lucie, FL 34984, 772-879-1000

Celebrating Life...Our Family Understands Your Loss



TREASURE COAST DENTAL

RESTORATIVE, COSMETIC & IMPLANT DENTISTRY

SERVING THE TREASURE COAST FOR OVER 25 YEARS

"I know that every second I am in their office, and in their care, I am in the best professional dental office in the area. Everyone was proud and genuine. You will also find patience plus. My dental work from Dr. Squier has changed my whole look and outlook. I am a 'smiler', and now I have a beautiful smile! Outstanding in every aspect."

-Andrea W



Dr. Rachel Schultz Squier
Board-Certified Prosthodontist

- Harvard University educated
- University of Connecticut

TBEI Members & Friends
FREE DENTAL
CONSULT*

www.tcdentalpros.com • (772) 337-2338

Our Procedures:

Fillings

Dental Cleanings

Crowns & Bridges

Extensive Bridgework

Porcelain Veneers

Dental Implant Placement &
Restoration in the same office

Fixed Implant Bridgework

Teeth-in-a-Day™

Teeth-in-an-Hour™

Implant-Secured Dentures

Premier Customized Dentures

Precision Partial Dentures

Teeth Whitening

TREASURE COAST JEWISH FILM FESTIVAL

2022/2023

Join Us!!
Tango Shalom
Virtually streamed
February 10th to 12th
See the flyer for
viewing information



TANGO SHALOM

Virtually streamed on Zoom

A orthodox Rabbi is asked to enter a dance contest. Due to his beliefs, he is not allowed to touch his partner. He creates a plan without sacrificing his or his family's beliefs.

POWDERKEG

MARCH 12, 2023
TEMPLE BETH SHALOM

Almost half the players on the Israeli national soccer team are Muslim including the captain. In a European tournament they are taunted by racist fans as well as the media.

GREENER PASTURES

APRIL 16, 2023
TEMPLE BEIT HAYAM

Dov is a widower and is sent to live in a nursing home and feels he is in jail. He dreams of rebuying his old home. Dov discovers you can buy cannabis legally in the home and this is his way out.

VISIT OUR AMAZING WEBSITE AT tcjff.com

CUT HERE AND RETURN

Checks payable to: TREASURE COAST JEWISH FILM FESTIVAL

Name[s] _____ Phone _____ email _____

Address _____ City _____ State _____ Zip _____

No. Series @ \$25 each _____ Total \$ _____

No. Patrons @ \$30 each _____ Total \$ _____

Donation for security \$ _____ TOTAL \$ _____

MAIL TO: Joan Weissman -Burton

248 NW Liseron Way, St. Lucie West FL 34986



Our Monthly TBEI Library Book Review.....by Sheilah Korinow

This month, I wanted to inform you of a book we have in our library which is useful for those of you who would like to pick apart the words of our Torah and would like to view the differences between a copy of the Torah you might have at home and this newest translation printed in the book I am reviewing - The Torah - The Five Books of Moses. It is the "new" (1992) edition, the JPS translation of the Holy Scriptures based on the traditional Hebrew text and written for the reader in contemporary English.

This was a major task to accomplish - almost three decades to complete, and many scholars from the three major branches of Judaism in America to do it. Never before - since the major undertaking in the 3rd century BCE. of 72 elders of the tribes of Israel created the Greek translation of scriptures known as the Septuagint - has such a broad group of Jewish scholars tackled translation. The explanation this book gives us is that "in executing this monumental task the translators made use of the entire range of biblical interpretation, ancient and modern Jewish and non-Jewish. They drew upon the latest findings in linguistics and archaeology as well as the work of early rabbis and medieval commentators, grammarians, and philologists." We are told that "the resulting text is a triumph of literary style and biblical scholarship, with unsurpassed accuracy and clarity."

The need for a new translation has been apparent. Obviously, this newer translation is much more accurate than older ones, because more recent discoveries in biblical archaeology have been made, and we have learned more about Near East language. We have discovered more about the "shades of meaning of words and expressions, and the force of grammatical forms of construction." Also, as every generation changes, so then does our need to understand the Bible in every generation.

You will find footnotes periodically because the committee admitted they did not understand a word or passage, or where an alternative was possible. The Preface discusses even more reasons for the footnotes. It also gives us other changes on its third page. Also, on the same page, there is a discussion about the chapter and verse divisions.

I'll now give you an example from this book. First, I will give you Chapter 1 of Genesis, verses 6-8 from a Bible I have - the JPS edition 1962, and then the same section from the book I am reviewing., 1992.

From the older edition:

And God said: 'Let there be a firmament in the midst of the waters, , and let it divide the waters from the waters.' And God made the firmament, and divided the waters which were under the firmament from the waters which were above the firmament; and it was so. And God called the firmament Heaven. And there was evening and there was morning, a second day.

From the newer translation in the book I am reviewing:

God said, "Let there be an expanse in the midst of the water, that it may separate water from water." God made the expanse, and it separated the water which was below the expanse from the water which was above the expanse. And it was so. God called the expanse Sky. And there was evening and there was morning, a second day.

What changes have you noticed between the two books?

I then started to really get into this and hopped around looking at versus with which I am familiar. It was interesting to see the changes - some seemed to be small changes, others more major. But of course, the real pleasure is to pick our brains about why these changes were ever made. It's amazing how time flew by when doing this. I think you would experience the same thing.

As time passes, people change and there is even more information gathered about ancient civilizations. It would be interesting to see what any future translations of the Torah would bring!

If you would like to check out this book from the library, contact me at skorinow@gmail.com.

**For more information about what's happening in the Temple
visit our Website:
TemplebethelIsrael.org**

Yates Funeral Home & Cremation Services

Family Owned and Operated
Serving the Jewish community of the Treasure Coast
For over 75 years

Now with three convenient locations to better serve you

Port St. Lucie
7951 S. US1

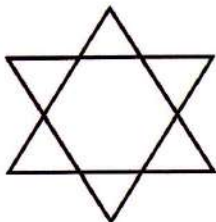
Port St. Lucie
526 SW Port St. Lucie Blvd.
(Just west of the Turnpike)

Fort Pierce
1101 S. US 1

Fort Pierce (772) 461-7000

Port St. Lucie (772) 878-2300

www.YatesFuneralHome.com



TREASURE COAST JEWISH FILM FESTIVAL

"TANGO SHALOM"

STREAMING VIRTUALLY FEBRUARY 10 - 12TH, 2023

ZOOM DISCUSSION WITH THE RABBIS
SUNDAY, FEBRUARY 12th @ 4:30 P.M.

For information contact: Leonard Berkman at LEONARDCB5665@GMAIL.COM


Donations are 6.00 per person

AN ORTHODOX RABBI IS ASKED
TO ENTER A DANCE CONTEST.

DUE TO HIS BELIEFS,
HE IS NOT ALLOWED TO TOUCH HIS PARTNER.
HE CREATES A PLAN WITHOUT SACRIFICING
HIS OR HIS FAMILY'S BELIEFS.



YATES
FUNERAL HOME
& CREMATION SERVICES
Tommy Conway, Jr.
Licensed Funeral Director
tomjr@yatesfuneralhome.com



NEW WAVE
REAL ESTATE GROUP
ONE SE OCEAN BLVD.
STUART, FL 34994
Call or Text: 772-475-3102
gaylesok@gmail.com
Gayle Sokoloff
Broker-Associate
I Love Palm Beach
Successfully Assisting Buyers and Sellers
on The Treasure Coast since 1981



TREASURE COAST DENTAL
IMPLANTS • CROWNS • BRIDGES • DENTURES
Dr. Rachel Squier
Board-Certified Prosthodontist
772-337-2338
1801 SE Hillmoxer Drive, Suite C-210
Port St. Lucie, Florida 34952
www.tcdentalpros.com
E-mail: info@tcdentalpros.com

FEBRUARY YAHRZEITS



*In
Loving
Memory*

4 - 10

1/28 - 3

Sophie L. Cohen
Flossie Cranor
Harry Epstein
Joseph Frisch
Rose Goldberg
Meyer Goodman
Barbara Graulich
Dr. Max Harrison
David Jacobs
Bertha Kallet
Moshe Keyzerman
Sarah Kezner
Peter Krumenacker
Marilyn Morgenstern
Edward Peckelis
Solomon Portnoy
Sam Rofsky
William Rothenberg
Mincha Schwartz
Jean Segal
Marcos Steisel
Rose Tartak
Dorothy Tenbrink
Sam Weinberg
Stuart Weinman
Anna Wheeler
Molly Wistreich
Harry Wynters

Herbert Babkes
Albert Berman
Louis Bernheim
Sandra Blatt
Meyer Block
Esther G. Everett
Jack Goldberg
Sylvia Goldberg
Etta Goldstein
Frances Herzlich
Ruth Kaplan
Yvetta Karpf
Gerald Katz
Rose Kent
Leila Levine
Eleanor Mager
Harold Morin
Charles Peckelis
Ellen Rosenberg
Marion Rosenzweig
Stella Safeer
Gladys H. Schnier
Irving Shatkin
Isaac Siegel
Ida Siegman
Sophia Silverstein
Solomon Slomowitz
Rose Leah Snider
Leonard Tosky
Sophie Weiss
Sarah Wortman
Gerald Wynne
Nathan Zarovsky

11 - 17

Charles Budoff
Rebecca Cantor
Israel Chansky
Michael Cooper
Bernard Drizin
Morris Goldwater
Abraham Graulich
Tina Hacht
Charles Hack
Sayde (Skip) Harris
Samuel Heller
Mark Infeld
Naomi Karr
Max Kauffman
Gussie Maloveny
Rachel Matlin
Fritz Meinhardt
Michael A Merlin
Robert Mesches
Sally Block Millman
Estelle Paden
Hyman D. Quasha
Richard Rosichan
Isaiah Sanderson
Phillip Schwartz
Augusta Shatkin
Libby Shnitzer
Evelyn Slavin
Marilyn Staiman
Jacques Teich
Dorothy Werner
Connie Yeglinski
Henry Moses Young

18 - 24

Mary Bornstein
Phyllis Brofman
Eileen Cohen
Renee Flower Cypress
Barnett Filler
Jennie Filler
Mollie Gabel
Murray Geffner
Leon Goldberg
Dorothy Gordon Heller
Esther Isenburg
Herbert Kahn
Jacqueline Krumenacker
Scott Lippman
Scott Keith Lippman
Edward Macy
Gunter Marcuse
Rose Mathis
Bruno Menkel
Lawrence Orange
William Peltz
Nan Rubin
Jonathan David Saxe
Philip Schwartz
Bernard Selkin
Louis Silver
Ted Stockel
Edward Joel Suss
Irving Whitman
Maurice Williams

25 - 3/3

Tillie Ambrosino
Anna Appel
Samuel Auerbach
Ezekiel Batinkoff
Nathan Belzer
Ruth Benson
Abraham Berkowitz
Meyer Deutsch
Sonia Feldman
Nathan Garfinkel
Rabbi Solomon Goldberg
Tillie Goldberg
Beverly Graulich
Martin Greshes
Meyer Charles Heller
Joseph Kampf
Fred Kohn
Anne Lidman
Esther Lotsof
Kurt Mandel
Edith Mendelson
Betty Passy-Davis
Joseph Potell
Bertha Rose
Sidney Rosenzweig
Lenore Ryshpan
William Schwartz
Norma Sidel
Max Sidelman
Alfred Simon
Albert Skolnick
Dorothy Skolnick
Alan Slepoy
Sidney Murray Slutskin
Etta Stack
Sara Stern
Israel Taslitt
Donald Ziev

APPROPRIATE PRACTICES:

- *Kaddish at Synagogue*
- *Memorial candle at home*
- *Donation to Synagogue in tribute to memory of deceased loved one*



YAHRZEIT

Observance is an annual reminder of the date of death of a loved one and a tribute to the influence they made on our lives.



For us, there is no greater responsibility than helping to honor and preserve a life's story. We believe every life should be commemorated.

- Adhering to Jewish Traditions.
- Part of the Nation's Largest Network of Jewish Funeral Homes.
- Traditional Burials, Transfer from State and Cremations.



AYCOCK

FUNERAL HOMES

Aycock Funeral Home
Floresta Drive
1504 SE Floresta Drive
772.878.0049

Aycock At Tradition
Life Celebration Center
12571 SW Tradition Parkway
772-618-2336



TREASURE COAST DERMATOLOGY
Specializing in the Treatment of Skin Cancer

TRUST US
WITH THE HEALTH
OF YOUR **SKIN**



TIM IOANNIDES, MD

- Board Certified by the American Board of Dermatology
- Voluntary Associate Professor, University of Miami School of Medicine
- Fellow, American Academy of Dermatology
- Fellow, American Society for Mohs Surgery

www.TCDermatology.com



Stuart Fort Pierce
772.221.3330 772.464.6464

St. Lucie West Vero Beach
772.878.3376 772.226.7218

Sebastian
772.388.1740



If you order from Amazon:

Temple Beth El Israel is enrolled in the **Amazon.com smile program**. Thru this program Temple Beth El Israel will receive a rebate of 1/2% of all money spent on Amazon.com. The only thing a member (or anyone else) needs to do is to log on to **smile.amazon.com** and then search for Temple Beth El Israel. The web site will take it from there. There is no additional cost to the purchaser. Thanks for your support.






**Catering for all
occasions!**

Bar & Bat Mitzvahs • Bris & Baby Namings
Shiva Platters • Traditional Holiday Dinners

Serving Breakfast, Lunch & Dinner.



toojays.com |    

Regency Square | 2504 S.E. Federal Highway | Stuart | 772-287-6514

MARTIN FUNERAL HOME

*Family owned and operated serving the families of Port St. Lucie,
Fort Pierce, Jensen Beach, Palm City, Stuart and Hobe Sound
Burials, Ship-outs & Cremation Services*



Susan King, L.F.D.
Owner and Funeral Director

*We are attentive to the needs of the bereaved
and to the strong traditions
of the Jewish People.*



Martin
Funeral Home
& Crematory

Port St. Lucie Chapel
714 SE St. Lucie Blvd.
Port St. Lucie, FL 34984
(772) 873-3733

Fax (772) 873-1429
Located on the SE Corner of
Port St. Lucie Blvd. and Floresta Blvd.

Stuart Chapel
961 S Kanner Hwy
Stuart, FL 34994
(772) 223-5550
Fax (772) 223-5101

Located on the SE Corner of
Kanner Highway and US Highway 1



TEMPLE BETH EL ISRAEL DONATION OPPORTUNITIES

Donor's Name _____

Address _____

City _____ State _____ Zip _____ Phone _____

Payable to TBEI:

\$ _____ Building Reserve Fund (to help cover expenses for repairs to equipment)

\$ _____ Capital Improvement Fund (for major improvements)

\$ _____ Flower Fund (for flowers on the Bima for Shabbat & Holidays)

\$ _____ General Fund (for general operations)

\$ _____ Hevra Fund (to provide meals of consolation for families in mourning)

\$ _____ Kiddush Fund (provides refreshments after Shabbat morning services)

\$ _____ Leaf on the Tree of Life:

Bronze \$100 Silver \$150 Gold \$200

In remembrance of a special person or event

\$ _____ Library Fund (for the purchase and upkeep of library books and equipment)

\$ _____ Memorial Plaques - \$200 - in memory of a loved one

\$ _____ Religious School Scholarship Fund

(to provide need-based scholarships for students attending our religious school)

\$ _____ Yahrzeit Fund (to commemorate the anniversary of the death of a loved one)

\$ _____ Music Fund (to provide musical accompaniment on Holidays and events)

\$ _____ Security Fund (to offset the cost of the Security Guard at TBEI)

\$ _____ Special ***Holocaust Torah MST 860 Fund***

Payable to Rabbi's Discretionary Fund:

\$ _____ For the use of the Rabbi for educational/charitable projects

Payable to TBEI Sisterhood:

\$ _____ Ida Rubin Book of Life (to send cards for any occasion - birthday, get well, etc.)

\$ _____ Oneg Shabbat Fund (to provide refreshments after Friday night Services)

Forms are available in the Temple office for all donation opportunities.

PLEASE INDICATE THE NAME OF THE FUND RECEIVING YOUR DONATION ON THE MEMO LINE OF YOUR CHECK.



TEMPLE BETH EL ISRAEL
551 SW Bethany Drive
Port St. Lucie, FL 34986
<http://www.templebethelisrael.org>



OR CURRENT RESIDENT

~ ~ ~ SAVE THE DATE ~ ~ ~

Be a part of our exciting celebration

On April 15th come walk with us
as we welcome our Holocaust Torah to TBEI

Judaica Shop Hours

Friday Evening 7 to 7:30 pm
Sundays by appointment

Call for appointment at other times.

Linda Chazin	871-1205
Faith Krumenacker	343-7639